



# APPLICATION PACK

Rector - Gauzebrook Group of Churches

# CONTENTS

Message from the Bishop	Page 3
The Diocese of Bristol	Page 4
Message from the Area Dean	Page 6
The Deanery	Page 7
The Gauzebrook Group	Page 8
Who we are and who God is calling us to be	Page 9
Our Context	Page 11
Parish and Worshipping Life	Page 12
Serving our Schools	Page 13
Our Team	Page 14
The Rectory	Page 17
The Churches of the Gauzebrook Group	Page 19
Pattern of Worship	Page 25
Role Profile	Page 27
Person Specification	Page 29
Parish and Financial Information	Page 31
How to apply	Page 36



# FROM THE BISHOP

Gauzebrook is a dynamic, missional multi-parish benefice with a strong sense of purpose. It sits within North Wiltshire deanery and a mission area that is committed to an innovative approach to rural ministry.

This group of churches work together well. They have a long history of faithful presence and engagement in their communities and enjoy their call to be the parish churches for each of the villages they serve. Gifted leadership in recent years has ensured that each of the church buildings is fit for worship and mission in 2025.

We seek someone to build on the strong start to the discernment of the vision for the benefice and lead them into the next phase of their lives as vibrant, outward-looking Christ-centred, communities.

I hope you will enjoy reading more about this benefice and the potential this role offers. This is a time of new opportunity under God in the Diocese of Bristol. Following Jesus, serving others and transforming communities with openness, creativity, generosity and courage lie at the heart of our diocesan strategy, Transforming Church. Together.

As you discern your call to serve in Gauzebrook benefice, we pray with you as a diocese, and a benefice which prizes pilgrimage:

**God of the Way, you call us to leave familiar places and to set out on new paths.**

**Enlarge our vision of your work in the communities we serve,**

**speak to us through the people we encounter and open our hearts to your love.**

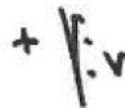
**Give us courage and boldness to engage together in this time of prayer and discernment;**

**and by your Holy, life-giving and creative Spirit, renew your church in prayer and service,**

**and in sharing the Good News of Jesus Christ, in whose name we pray.**

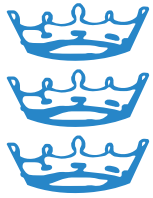
**Amen**

Yours in Christ



The Right Reverend  
Vivienne Faull  
Bishop of Bristol





# THE DIOCESE OF BRISTOL

## HUMANITY RECONCILED CREATION RESTORED

The Diocese of Bristol is presided over by the Bishop of Bristol, The Right Reverend Vivienne Faull. The Bishop of Bristol is supported by the Suffragan Bishop of Swindon, The Right Reverend Neil Warwick. The Venerable Christopher Bryan is the Archdeacon of Malmesbury and the Venerable Becky Waring is the Archdeacon of Bristol. The Reverend Adam Beaumont is the Associate Archdeacon.

***Transforming Church. Together (TCT)*** its vision: Humanity Reconciled, Creation Restored. It began in 2021 with an extended period of listening to God and to one another. People from across the Diocese joined in conversations and online questionnaires to share experiences of faith, society and the church, and to discuss hopes for the future. From these conversations, four guiding values were discerned: Creativity, Openness, Bravery and Generosity.

Those values inspired a vision and strategy which seeks

transformation across the whole Diocese by the grace of God. Each Deanery and Benefice is encouraged to work out what TCT means in their particular context – the same principles can inspire and develop mission in very different ways. With major financial support from the national church, the Diocese is offering support and resources in key priority areas of ministry. These include:

- Enabling parishes to discern vision and implement plans
- Help for benefices with evangelism, discipleship plans and resources
- Training, coaching and support for teams setting up and running Fresh Expressions
- Support for ministerial wellbeing and vocation. Each incumbent will receive bimonthly coaching sessions, with additional support for those new to their post.
- Enhanced provision for volunteer training and administering safeguarding

- Increased capacity in the Diocesan office to support parishes with the care and improvement of church buildings
- Investing to become a Net Zero Diocese by 2030
- Overcoming barriers to faith by addressing the church's history on racial justice and diversity
- Developing partnerships between the church at various levels and local councils, businesses etc
- Investment in work with under 18s through school chaplaincy, youth interns and workers
- Investment in deprived parishes, church plants/grfts and new Mission Areas

This is a huge, exciting, and sometimes frightening vision, which we can only attempt in the strength Jesus supplies through his Spirit.

### **Diocesan Support Service**

The Diocesan Support Services exist to support the mission of the church. Based at the Diocesan Office to the north of Bristol and made up of 50 employees and volunteers, the DSS serve ministers, parishes and schools by expressing vision, strengthening relationships, empowering people, maximizing resources and developing structures. We offer training, consultancy, advice in a range of areas, highlight and share best practice across the Diocese and manage different aspects of the life of the Diocese.



# FROM THE AREA DEAN

## WHY HERE? WHY NOW?

North Wiltshire Deanery is a grouping of 6 largely rural benefices with only 2 town churches amongst our 31 parishes, coming into being in 2016 after a large scale pastoral reorganisation. Chapter comprises 6 incumbents and 10 self-supporting associate / active retired clergy, with good administrative support. It is also fertile ground for curates – we have 3 at the present time, one of whom is ‘Curate-in-charge’ in Gauzebrook during this period of vacancy.

Over the last few years as the North Wiltshire Mission Area, the working relationships between both clergy and senior laity have become ever closer, as we work across boundaries, doing many things ‘better together’ by pooling our resources whilst leaving parishes the freedom of doing best what they do locally.

This is not without its challenges, and we are at a point of transition where the funding for the Mission Area is ending and we have to find ongoing funding for those things which we wish to continue, for example our very successful youth programme.

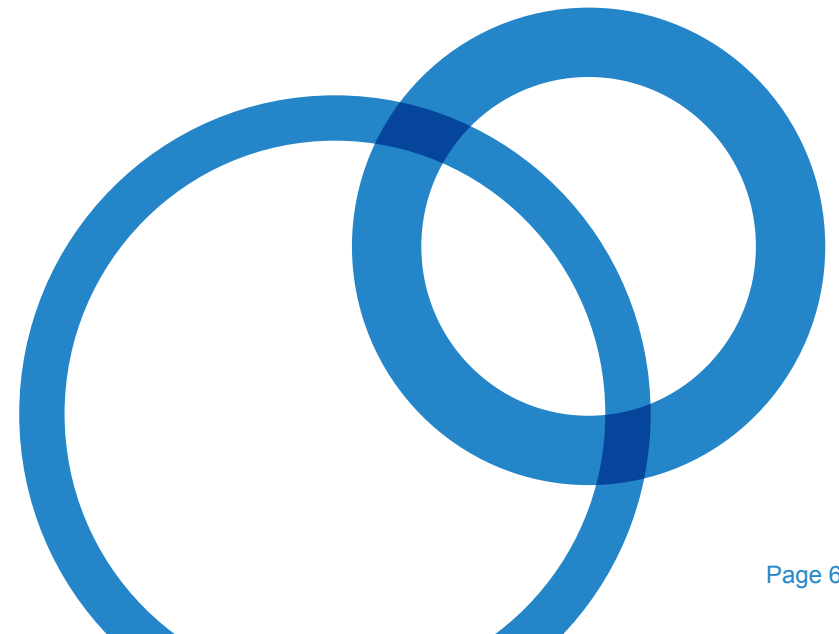
In this group of churches you will find a close-knit supportive team of colleagues, church members who have a heart for their communities, and a vision for how they long these churches to

flourish. We are looking for someone who can lead this group in continuing to discern who God is calling them to be. We pray for everybody who reads this pack and feels the need to test God’s calling towards North Wiltshire!

Please be assured of my prayers as you consider this profile and discern God’s call upon you.

[The Reverend Steve Wilkinson,](#)

[Rector of the Woodbridge Group & Area Dean of North Wiltshire.](#)



# THE DEANERY

## NORTH WILTSHIRE MISSION AREA (NWMA)

The Diocese of Bristol has a strategic initiative to support its vision and priorities to develop Mission Area and Resourcing Churches. In a Mission Area, parishes across a wider geographical area partner in a co-ordinated approach to mission.

Since 2017 the 31 parishes of North Wiltshire have been working closer together, underpinned by the Strategic Development Fund. The funding is now coming to an end, but the way we are working together has been permanently changed by deepened relationships between both clergy and laity. Where we can benefit from “Better Together” we do so (e.g. annual Marriage Preparation), but where something is best done locally it is left to the parishes.

There are some exciting projects in the deanery which are not only bringing the churches together, but also giving a sense of mission to our outreach.

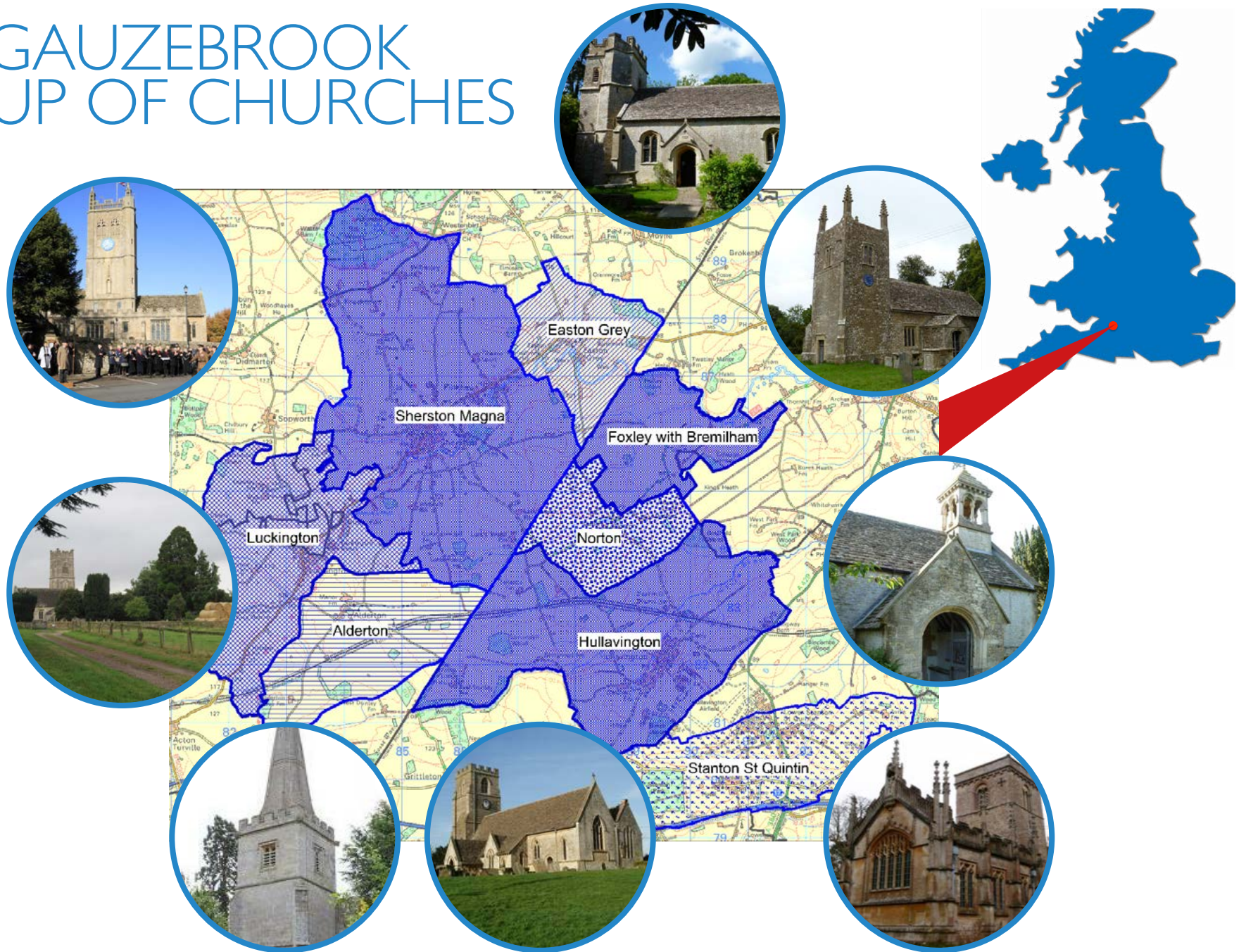
We have collaborated on Eco-Church, with 77% of the parishes currently having either a Bronze or Silver award, and we are working together to support each other through the challenges of reaching Carbon Net Zero by 2030.

## THE ATHELSTAN PILGRIM WAY

- The Athelstan Pilgrim Way, timed to coincide with the 1100th anniversary of King Athelstan’s ascension to the throne in 924 and coronation in 925 is being progressively launched through 2024/25. Athelstan spent a lot of time in this area and was buried in the original Malmesbury Abbey. We have developed way markers, maps, guidebooks, cycle routes, advertising boards, information leaflets, passports etc. to make this wonderful walking route, where nature can be enjoyed, spirits renewed, and in some cases self-discovery, can take place. The walking route appeals to anyone who enjoys looking at historic buildings whilst appreciating nature and putting some miles onto their exercise routine.
- A Pilgrimage Route has been created around the church buildings of our deanery. The route has been broken up into six circular walks, and guidebooks for adults and children, with a stuffed toy dog in each church for younger visitors to look out for.



# THE GAUZE BROOK GROUP OF CHURCHES





# WHO WE ARE AND WHO GOD IS CALLING US TO BE

## WHO WE ARE

The Gauzebrook Group is a benefice of eight parishes, each with its own history and unique characteristics, seeking to work together, sharing a common vision of Loving God, Loving Neighbour.

- We seek to serve our communities, recognising the importance of being focal points of connection, belonging, welcome and invitation; we are caring and supportive and want to do all we can to reflect God's love for the world.
- We seek to encourage one another in prayer and faith; we value opportunities to unite in worship through our monthly benefice services so that together we grow into faith-filled people who can enable others to encounter the living God.
- We value diversity, with worship across the group that reflects a breadth of tradition and worship style.
- We value our beautiful buildings and take seriously our responsibility as custodians of these. We aim for our churches to be open as much as possible, so that the whole community can find within them places of sanctuary and peace.
- We value hospitality, reflecting the call to be in fellowship with each other; we reach out to the community with spaces in our churches that operate as coffee shops, or community hubs.
- We value our young people and seek to engage with our schools as well as to develop opportunities for families and young people to grow in their faith.



*“Church is a place in which I can feel removed from the ‘noise’ of the world.”<sup>1</sup>*

<sup>1</sup> Quotations are taken from a survey of congregations and visitors in December 2023

## WHO GOD IS CALLING US TO BE

- We want to see lives changed through faith. We recognise there are opportunities for growth in discipleship, within our gathered congregations, through the nurture of those newly embarking on their faith journeys and in deepening our relationship with schools and families.
- We want to embody the diocesan values of generosity, creativity, bravery and openness, and recognise we need leadership and resources to equip and encourage us as we explore together how to be a relevant church for today's culture and needs.
- We want energy to be released for the exciting, hopeful and joy-filled missional opportunities that God gives us in our communities. We recognise our current governance structures limit and frustrate us. We look for leadership to continue to unite us and to build on the potential of the Gauzebrook Council as a place for mutual sharing, decision-making and collaboration.

- We want to build on our heart for hospitality and outreach by being people and places that are Christ-like, invitational and inclusive. We look for help to continue to discern priorities and to enable the change we long to see.
- We want our churches to be sustainable, so look for encouragement in our stewardship of finances, time, talents and gifts, and our ongoing journey towards carbon net zero.

*“Attending church enables us to strengthen bonds of our Christian community.”*



*Holy Cross, Sherston, visit Wiltshire Air Ambulance, one of their charities.*



# OUR CONTEXT

The Gauzebrook benefice covers eight rural parishes in the Deanery of North Wiltshire in the Diocese of Bristol. The county border between Wiltshire and Gloucestershire crosses the north of the benefice, and the M4 motorway is at the south. The benefice sits between the towns of Malmesbury, Tetbury and Chippenham. Bristol, Bath, and Swindon are about half an hour's drive away and London is about 70 minutes by rail from Chippenham or Kemble. The area is on the edge of the Cotswolds, a designated area of outstanding natural beauty and Westonbirt Arboretum is within the benefice's boundaries. Many of the villages are also in conservation areas. Although it is a rural benefice with working farms in the area, employment opportunities are very varied. There are many local enterprises of all types; some people work from home offices, whilst others undertake either short or long-distance commutes.

9 Regiment, Royal Logistic Corps, is based at Buckley Barracks in Stanton St Quintin, with married quarters accommodation

in both the parishes of Hullavington and Stanton St Quintin. With good relationships with the Regiment, Remembrance Day services in Hullavington, Luckington, Sherston and Stanton St Quintin have good attendance and community involvement, with support from the military as well as from our local uniformed organisations. Our schools also hold their own remembrance services in their churches on 11th November or nearest school day .

There are four primary schools in the Group, two of which are Church of England voluntary controlled, and we have strong links with them all. Secondary aged pupils from the area have options for state schools in Malmesbury, Tetbury, Chippenham, Cirencester and Stroud, as well as many private schools.

We are thrilled that our historic parish churches include some real gems. St Mary with St Ethelbert, Luckington, has been used for several films and television programmes. It is well known as the subject of the hymn

“Let all the world, in every corner sing!” sung to the tune “Luckington.” Bremilham Church, in the parish of Foxley, is the smallest active church in England, with an annual Rogation Day Service which is well attended by people across the benefice. Foxley Church is also used as a film location. St Giles, Alderton is a potential film star, as internally it remains as it was restored in 1845.

Our church buildings are described on our website, [www.gauzebrook.org](http://www.gauzebrook.org) with links to individual parishes via A Church Near You. The parishes are proud of their churches and their history. All our church buildings are open daily during daylight hours, providing a valuable physical link for the community and visitors.



# PARISH AND WORSHIPPING LIFE

Our villages have their own characteristics and local flavour, with a strong community in each of them. Many church members have prominent roles in the villages, serving on parish councils, developing neighbourhood plans, serving as school governors, and enjoying active participation in community groups. We recognise the importance of pastoral care for those facing a range of challenges in and beyond our parish boundaries. Outreach is both practical and financial. In the case of the former, we work hard to keep abreast of the needs of our local residents, regardless of whether they are church attenders, and provide appropriately sensitive support on an individual basis. Charitable giving is determined on an individual parish basis. PCCs identify priorities for donations and giving to external charities, at local, national and international level. Christian Aid week, on the other hand, continues to be organised centrally.

Providing encouragement in our faith to one another is a priority in our rural location. As well as the opportunity to

attend group services in our different churches, we organise Lent groups and study groups across the benefice. Active home groups, run by lay people, meet regularly in Hullavington and Stanton St Quintin, welcoming members from across the group for Bible study, prayer and friendship. A group also meets weekly at lunchtimes in the Old Royal Ship in Luckington for study and fellowship.

The Gauzebrook Family Choir sings at special services; festival choirs are a very popular element of our group Advent services, a joyous example of worship with good attendance and refreshments afterwards. We have several musicians, including organists, across the group to support our worship. The village carol services held in each parish are all well attended, with strong attendance even in the small church of Alderton. The Christmas Day service at Easton Grey (a festival church) brings the village together.

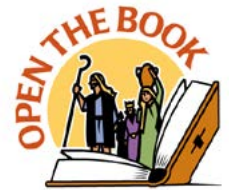
All our churches have an important role in their communities through funeral services, weddings and baptisms. Stanton

St Quintin's location next to a hotel encourages use of the church for wedding services, and brings wedding couples into church. Many couples remain in contact with the church after their ceremony, which on occasion has led to their baptism. Alderton and Sherston both have working bell towers and teams of ringers, and host visiting bell ringers to their towers. Both sets of bells are rung before morning services and on special occasions.

We serve refreshments after morning services in most of our churches. Somehow our volunteers manage to provide coffee and cakes at the group services - even at the smaller churches with no facilities!

***"We are a community of all ages and backgrounds."***

# SERVING OUR SCHOOLS



We work with our two church schools in Hullavington and Sherston and with the community schools in Luckington and Stanton St Quintin. All the local primary schools hold services in the local churches during the year, including Christingle, Easter and Harvest, and members of our ministry team visit the schools to lead Collective Worship. Other volunteers lead 'Open the Book' worship, after school clubs and we offer 'Experience' events in our churches to enhance the RE curriculum and to show our children that they are always welcome in church. In addition, our Church of England schools benefit from active Foundation Governors who offer advice and support particularly during SIAMS and Ofsted inspections.

## SERVING OUR YOUNG PEOPLE

Together with our work in schools, we realise how important it is to establish a pattern of worship which suits younger families. This begins with careful preparation at the time of baptism and is followed through with our weekly toddler service,

'Little Lights'. Opportunities for all age worship occur regularly in our churches and are augmented by a monthly Messy Church in Hullavington, and Adventure Church. This uses the wonderful countryside we have locally to teach our families through interaction with the outdoors. We retold the parable of the sower on a farm walk, we visited local donkeys and a stable for Christmas and enjoyed searching for the Lost Sheep by following a trail of wool.

Two of the primary schools within the Group benefit from substantial funding each year from a small charity, the Anne Brayne Foundation, the aim of which is to support religious education and activities for those below the age of twenty-five in five of the Group's parishes.

Together with other churches which make up the North Wiltshire Mission Area, we have jointly funded the NWMA: Youth programme which employs a Youth Mission Enabler and a Youth Work Intern via SWYM (South West Youth Ministries).

We are delighted that the mission has grown over the last three years to provide regular Christian Union sessions at Malmesbury Secondary School. In November, the team also spent a week with pupils looking at the topic of "empathy" and how Jesus' humanity means that he has unique empathy with our daily lived experience. Other activities include a weekly peripatetic Sunday evening youth homegroup, a regular monthly social event and now a fledgling youth band with occasional worship events. There is also a limited crossover into primary schools, with some work with pupils in Year 6 as they approach the transition to secondary education.



# OUR TEAM

## MINISTRY TEAM

The Ministry Team consists of the Stipendiary Curate, Associate Minister (SSM) and five LLMs. We also have the services of a retired priest who holds PTO. One of our LLMs is our former Rural Schools & Churches Worker. The ministry team meets weekly for Pause and Pray, an opportunity for spiritual support and encouragement as well as for organising parish business and being an active communication link across the group.

Members of the Ministry Team enjoy conducting services in a range of styles. While some members minister more frequently in particular churches, all churches benefit from their availability to lead services.



### The Reverend Sharon Glead Curate-in-Charge

Full-time stipendiary curate appointed in July 2022.

*“I love rural ministry and am blessed in many ways, including supportive communities and a range of services and traditions across the Gauzebrook Group of churches. I have a heart for caring for people and creation. I love to participate in ecumenical and community events and fresh expressions ministry.”*



### The Reverend Susan Harvey

Sherston resident for many years and a full time Self Supporting Minister since 2012.

*“I have much experience in pastoral ministry across the group and enjoy building the relationships involved in taking Occasional Offices.”*



### The Reverend Alastair Davies PTO

Ordained in 1984 and served as an RAF Chaplain and the Senior Chaplain at the Royal United Hospital Bath, holds PTO in the Dioceses of Bristol and Europe and is also a volunteer Chaplain on cruise ships.

*"I take services in the churches across the group and neighbouring parishes. I am a trained Spiritual Director and Cruse Bereavement Volunteer."*



### Helen Davies Licensed Lay Minister

Licensed in 2021.

*"I enjoy supporting the Gauzebrook group of churches by taking Morning Praise, informal services of the word, school assemblies, Evensong, and funerals. I am normally available for 2 services a month. I am sub-warden for Licensed Lay Ministers for the deanery and have completed a course in Spiritual Direction."*



### Marjorie Morgan Licensed Lay Minister

Lay Minister for 31 years and long-term resident of Stanton St Quintin.

*"I lead non Eucharist services once or twice a month"*



### Becky Fisher Licensed Lay Minister

Appointed Rural Schools and Churches Worker in 2012; although now retired, continues to serve our schools and families in a voluntary capacity

*"I am a Godly Play Advocate and would like to have time to do more Godly Play across the group. As LLM I lead worship on two Sundays a month."*



### John and Henny Metters Licensed Lay Ministers

Licensed as Lay Ministers in 2005.

*"John now takes occasional services and Henny takes services once or twice a month."*

***"We value the commitment and the hard work of the ministry team as well as all those who contribute time and effort supporting the church in diverse ways."***

## ADMINISTRATIVE SUPPORT AND COMMUNICATION

The Gauzebrook Group relies on many volunteers who provide valuable support, often unseen or unnoticed by many. Collectively, our volunteers provide countless years of experience, as well as being an active link with the villages and communities of the group.

We share a part-time (20 hours a week) Administrator with the nearby Braydon Brook Group. This arrangement works well, as both groups gain from the shared work experience and knowledge. Our administrator is the main public point of contact and supports the two incumbents and ministry teams. As well as being the point of contact for weddings and funerals, our administrator's work includes co-ordinating diocesan fees for the group, the Group Diary, preparation and distribution of the weekly electronic newsletter (the Gauzebrook Gazette) and website postings.

The office is located adjacent to Malmesbury Abbey, with which the Group has close connections.

The group uses a variety of internal and external communication methods including:

- A weekly email newsletter to 196 addresses on the group distribution list, giving details of services for the coming weekend and the following week. Some parishes print a small number of these for physical distribution;
- Articles and publicity in village magazines such as the Cliffhanger (Sherston), Hullavington News (Hullavington); Community Matters (Luckington by email);
- Pew sheets and information for visitors, inside churches and on notice boards;
- Christmas cards detailing the seasonal activities and worship;
- Social media (Gauzebrook Facebook page), and shared postings onto village pages;
- Websites.

The printed Gauzebrook monthly magazine, (The Parish Life, circulation 450) was suspended in January 2024 as it had become uneconomic, and we are looking at alternatives for communication.





# THE RECTORY

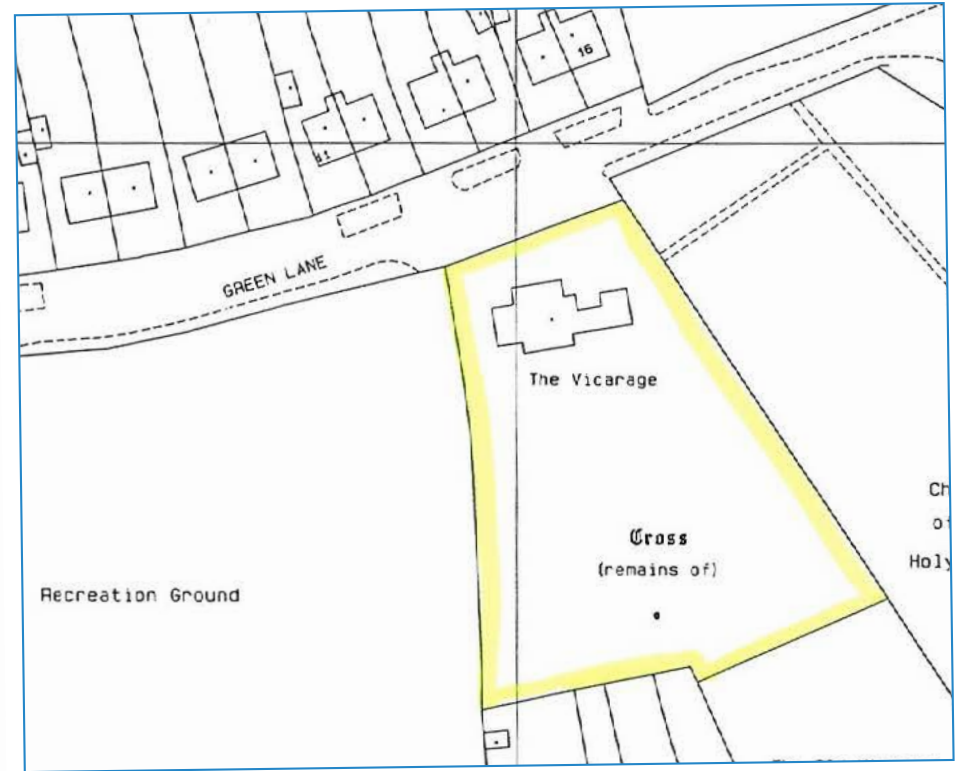
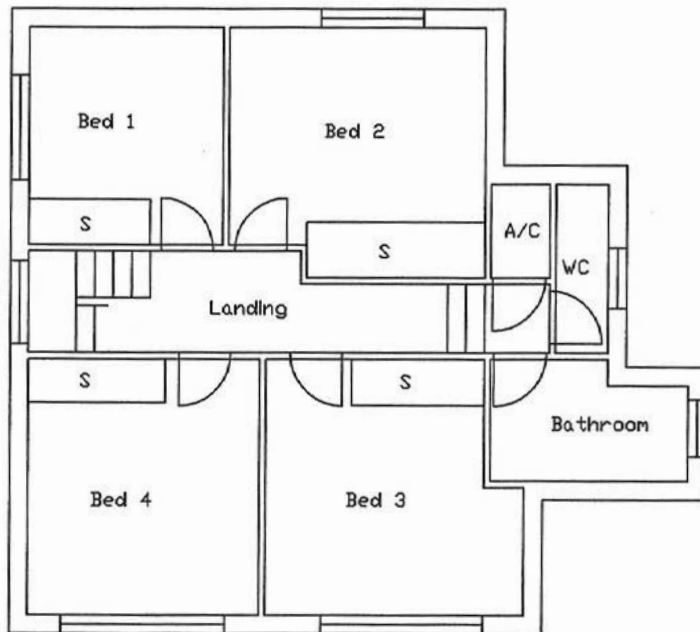
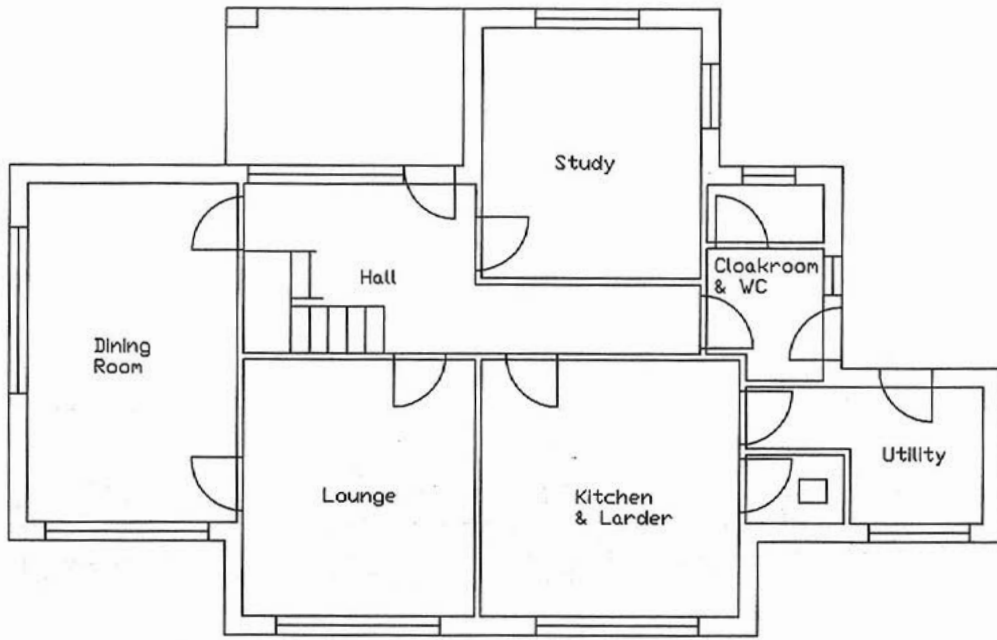
It is in the village of Sherston ([www.sherston.org.uk](http://www.sherston.org.uk)), the largest of the eight parishes, situated adjacent to the churchyard. It is 200 yards from the local primary school ([www.sherstonprimary.co.uk](http://www.sherstonprimary.co.uk)) in one direction and 200 yards from the High Street in the other. Sherston is an attractive Cotswold village that is frequently included in lists of desirable, popular or top villages in the country by newspapers and journals. The village has a Post Office and Co-op store, two pubs, hairdressers, coffee shops, takeaway restaurant, motor repair garages and many other businesses. The village and its environs have numerous active clubs and societies for all ages. Many villagers and visitors take part in the annual Boules festival held on the High Street.

The vicarage is a four bedroomed 1970s building to the rear of the Church, and adjacent to the Pennymead Recreation Ground. The property was extensively refurbished in 2020 with a new roof, kitchen, bathroom, internal and external

doors and windows, boiler and radiators, and carpets installed. There is a large garden, with lawn, flower and vegetable beds, and a tennis court.

Sherston is 12 miles from Chippenham, 17 miles from Bath, 5 miles from Tetbury and Malmesbury. Nowhere in the benefice is more than 15 minutes' drive from the Vicarage (subject to floods, tractors and other rural delights.) Visiting all the churches requires a circumnavigation of about 20 miles.





*View of the church from the vicarage*



# THE CHURCHES OF THE GAUZEBROOK GROUP

## ALDERTON - THE CHURCH OF ST GILES

Alderton, about two miles from both Sherston and Luckington, is a village of 35 homes and two working farms. As well as many listed houses it is known for its duck pond, home to a variety of duck species.

St Giles, Alderton, is a twelfth century Grade II\* listed building. Five of the chest tombs in the graveyard are also Grade II listed. The church was extensively rebuilt during the renovation and extension in 1845 to include the addition of its spire, which is visible from some distance. The original features that remained after this include pointed arches, the roof of the nave, the Saxon pillars of the north door and most of the tower. The bells were rehung as a millennium project and the roof, and tower were restored eight years ago.

There is a morning service at least once a month, and special services at Festivals.

*“The church is extremely welcoming of my young family.”*



## EASTON GREY

Easton Grey is an unspoilt beautiful old village nestling in a deep green hollow. The river Avon meanders by a 5 stone arch bridge dating from the sixteenth century. There are approximately 30 historic houses with around 80 residents of all ages.

Our small Grade II listed church stands just above the village in the grounds of Easton Grey House. It has a fifteenth century west tower; the rest, including the box pews, was a rebuilding to designs approved in 1836.

The church, always open for people to enjoy, is well visited and appreciated, judging by the comments in the visitors' book.

In 2019 the church was designated as a festival church. The church is well loved in the village, and tasks such as minor repairs, grass cutting, church cleaning, flower arranging, and Christmas decorations are carried out by valued volunteers working to their own rota.

## FOXLEY WITH BREMILHAM

Foxley is the closest of the Gauzebrook parishes to Malmesbury and is united with the even smaller parish of Bremilham.

Foxley is centred on a beautiful twelfth century church whilst, at twelve feet square, Bremilham boasts the smallest church in England in use, with its regular annual Rogation Day service for the Gauzebrook Group. The congregation is outside whatever the weather! The Bremilham church building is the property of one of the two farms in the village and is not the responsibility of the PCC.

Foxley is a close-knit community of about eighty including young families and those who have lived in the village almost all their adult lives. There is one service a month in the Parish Church, attended by a faithful congregation of eight to ten. These numbers swelled to sixty for Christmas and Easter and our special services such as celebrating Baptism or the Pets' service.

We all celebrate when there is a baptism or wedding in the village. Community is important here and the church is central to its cohesion. The village community assists with tidying the churchyard. Our harvest service concludes with an auction of produce, and funds raised are donated to the Wiltshire Air Ambulance and other local charities.



## HULLAVINGTON - THE CHURCH OF ST MARY MAGDALENE

Hullavington is a vibrant, friendly, and increasingly diverse community. In addition to our active church, there is a village hall, shop, post office, garage and, on its outskirts, a popular café and brewery tap bar. It is the second largest village in the Gauzebrook Group with a population of about 1350, and is set to grow as planning permission has been granted for seventy houses adjacent to the school.

Educational facilities in the community are excellent with a Church of England Primary and Nursery School, both with a high proportion of pupils from service families.

St Mary Magdalene Church, re-ordered in 2018, is in the centre of the village and provides a stunning venue for worship. The church offers a warm, inviting, and flexible space that is shared with the community and used most days of the week. Whilst the Parish Council maintains the churchyard, a group of volunteers maintains the building and its environs. Residents from across the village come together to enjoy a sense of community and demonstrate their care for the grounds and the fabric of our lovely church.

The weekly Friday coffee and cake shop in church is supported by a broad range of people for chat and fellowship. The Hub, on the first Saturday morning and lunchtime each month, is an opportunity for those working during the week to enjoy our church's hospitality.



***“We feel we belong together; we are stronger together sharing fellowship and faith.”***

## LUCKINGTON – THE CHURCH OF ST MARY AND ST ETHELBERT

Luckington has a population of 600. The village hall is run by its own committee, and a playing field with separate play area are cared for by the local playground committee. The village pub houses the village shop.

St Mary and St Ethelbert Church is a beautiful Grade I listed building of historic interest with a thirteenth Century tower. Some years ago, it was used as the 'wedding' setting in the BBC's version of 'Pride & Prejudice', and it has recently been used again for filming another 'Jane Austen' wedding.

We have services twice a month. The congregation, although small, has now been swelled by members of the village's recently closed Methodist church and as a result, our services now tend to have a more ecumenical feel.

In addition to the normal service collection, funds are raised via regular giving, and by profits from such events as Christmas parties, Open Gardens and concerts. The PCC, together with the Playground and Pre-School Committees, arrange the annual village fete and barbecue Party, sharing the proceeds together.

## NORTON – THE CHURCH OF ALL SAINTS

Norton is a small Wiltshire village with twenty-eight houses and a population of sixty. It has a beautiful Manor House, and two working farms. The church is in the centre of the village.

The congregation of Norton numbers about twenty regular worshippers each month. We continue to greatly benefit from the support of 'The Friends of Norton' at our monthly service. We use recorded music during services. Worship is along traditional lines with a relaxed, reverent and sincere approach. The Harvest and Christmas celebrations are well attended.

We have increased our involvement with the community, receiving support to maintain the churchyard. Our local volunteers form a regular rota for cleaning, flowers and refreshments after each service.

Funds have been allocated to building repair and maintenance, particularly the rainwater goods, roof, and interior redecoration. We want to be in a strong position to maintain and improve the church fabric to preserve it for future generations, as we see the church as a place of peace and an ecumenical house of prayer, worship and retreat where all are welcomed, whether from the local community, Gauzebrook or further afield.



## SHERSTON MAGNA - THE CHURCH OF THE HOLY CROSS

About 1800 people live in the parish of Sherston, which includes the hamlets of Willesley and Knockdown. There is a strong sense of community and a wide range of local organisations and village events which are always well supported.

We take pride in the Church of England liturgy in its traditional form and this is reflected in our preference for regular Eucharist services. Festival and special services are very well-attended, attracting the wider community.

We have very good links with the local Congregational and Methodist Churches, sharing services and house groups and social events and our monthly warm space initiative.

We hold a weekly café in church, and we are able to host village events, such as the biennial Arts festival in our North Aisle, which makes the building an asset to the community. As well as members of the congregation, many other volunteers help us to care for our church fabric and we value this very highly. Our fund-raising events are as much about working within the local

community as raising money. We have recently formed a Living Churchyard Group, which is linked to our Eco-Church activities and the work of Sustainable Sherston. Many village residents donated generously to our recent maintenance projects, including roof repairs, which helps us to remember that our church is both geographically and socially in the centre of the village.



## STANTON ST QUINTIN - THE CHURCH OF ST GILES

Stanton St Quintin's 250 houses are in Stanton St Quintin and Lower Stanton St Quintin, separated by the A429. The church's Parish Hall is midway between the two parts of the village and is used regularly by various community groups and by the church for social activities.

The church building is Grade II\* listed and dates from the twelfth to the fifteenth century. The church was reordered in 2020 and includes an audio visual system, heating, a toilet, and kitchen. The churchyard is maintained as a wildlife haven and has won an award as a Living Churchyard. We plan to use funds from a legacy to install solar panels to offset future electricity costs.

Our services follow a traditional format but are relaxed and welcoming. We serve refreshments after services to encourage fellowship and build relationships. We want to support regular worshippers, visitors and newcomers to the area, including wedding couples at the hotel next door.

The church enjoys good links with the school and this relationship is important: a pupil was recently heard to describe St Giles as "My

school church". The church is appreciated and valued by the community with the church and parish joining together, not only to raise money for the hall, the church, the school, the war memorial and outside charities, but to promote and maintain fellowship. Church members support the village social activities.

Our Thursday afternoon coffee shop offers a warm welcome to residents and visitors and occasional Saturday morning sessions include those unable to attend on Thursdays. We give an annual tea party to recognise and thank all our volunteers for their support.





# GAUZEBOOK GROUP PATTERN OF WORSHIP

We have used the interregnum to reconsider our arrangements for services, to make best use of our resources and to provide worship and the sacraments throughout our communities. This is an ongoing process that we expect will continue to adapt and change. The rota reflects that it is not possible for the smaller churches to have services each Sunday.

We aim that there shall always be a Eucharist service within the Group on a Sunday, Ash Wednesday, and Maundy Thursday. We offer a monthly morning service of Holy Communion for all the parishes on each second Sunday and a Service of the Word when there is a 5th Sunday. The venue for these services rotates across the benefice. We hold an evening BCP Communion for the benefice in Sherston on the first Sunday. Evening Prayer with variations (including Taize, Celtic and Iona) is held on the second Sunday each month in Hullavington, with a BCP Evening Prayer offered in Sherston on the 4th Sunday.

As a trial, for the winter months (November – February) we are starting our evening services at 16.30 instead of the traditional 18.30

Our annual Rogation service is held at Bremilham Church, part of Foxley parish.

Adventure church led by one of our LLMs, is held on every 5th Sunday, and runs mainly outdoors, with some teaching and refreshments inside. The venue again rotates across the benefice.



Services of the Word

Holy Communion

PARISH	1ST SUNDAY	2ND SUNDAY	3RD SUNDAY	4TH SUNDAY	5TH SUNDAY
<b>Group Morning Service</b>		<b>10:00</b> <b>Location varies</b> <b>each month</b>			<b>10:00</b> <b>Location varies</b> <b>each month</b>
<b>Alderton</b>	<b>09:30</b>				
<b>Easton Grey - Festival Church</b>					
<b>Foxley</b>			<b>11:00 (BCP)</b>		
<b>Hullavington</b>	<b>11:00</b>		<b>11:00</b>	<b>11:00</b>	
<b>Luckington</b>	<b>11:00</b>		<b>11:00</b>		
<b>Norton</b>				<b>11:00</b>	
<b>Sherston</b>	<b>09:30</b>		<b>09:30</b>	<b>09:30</b>	
<b>Stanton St Quintin</b>	<b>09:30</b>		<b>09:30</b>	<b>09:30</b>	
<b>Group Evening Services</b> (Nov-Feb) trial of revised time of 16:30pm	<b>18:00</b> <b>(16:30 Nov-Feb)</b> <b>Sherston (BCP)</b>	<b>18:00</b> <b>(16:30 Nov-Feb)</b> <b>Hullavington</b> Evening Prayer		<b>18:00</b> <b>(16:30 Nov-Feb)</b> <b>Sherston</b> BCP Evening Prayer	<b>18:00</b> <b>(16:30 Nov-Feb)</b> Holy Communion

# ROLE PROFILE

<b>Role Title</b>	<b>Rector of Gauzebrook Group of Churches</b>
<b>Name of Benefice</b>	<b>Gauzebrook</b>
<b>Archdeaconry</b>	<b>Malmesbury</b>
<b>Deanery</b>	<b>North Wiltshire</b>

## ROLE PURPOSE

### GENERAL

To nurture the faith and discipleship of our existing church members and to teach, guide and further develop our approach to evangelism by leading and working with the churches and their communities.

### RESPONSIBILITIES

#### LEADERSHIP

- Develop through consultation the vision for the Group that will enable it to look to the future with optimism
- Model good teaching, prayer and discipleship
- Lead the Gauzebrook Group in its continuing development of mission
- Provide ongoing structure and guidance to the Ministry Team
- Oversee the management of the Group Administrator
- Train, supervise and encourage curates, those on training courses and those exploring their vocation in the church and other areas of lay leadership
- Encourage and continue partnerships with our church schools

#### WORSHIP

- With the support of the Ministry Team lead services and occasional offices throughout the parishes of the Group
- Develop both traditional and modern styles of worship
- Provide a focus and direction for the Group services

#### DISCIPLESHIP

- Lead, encourage and assist people in their spiritual development through a commitment to prayer and Bible study
- Mentor with understanding and sensitivity- being prepared to challenge where necessary
- Proactively use the talents and goodwill of the village communities in order to grow the Kingdom of God
- Encourage, facilitate and develop our small groups programme
- Provide opportunities for individuals to explore their personal beliefs and development
- Encourage communities to give generously in response to God's generosity

#### PASTORAL CARE

- Take an active role in pastoral care and visiting
- Develop the pastoral care structure within the Group

---

## ADMINISTRATION AND PARISH ORGANISATION

- Work in collaboration with the PCCs, Churchwardens, Group Council and the Administrator to ensure effective organisation of the benefice
- Attend PCC meetings as appropriate, using personal judgement to assess when attendance is necessary and at other times trusting in the qualities of PCCs members to ensure the effective function of individual councils
- Advise on and direct building initiatives and financial management systems when required
- Affirm and abide by national, diocesan and Group policies and legal requirements

---

## SCHOOLS

- Visit schools, lead worship, encourage and co-ordinate the work of the RSCW and volunteers in schools
- Encourage religious education and, through contact with schools, develop a greater understanding of the role of the church within the local communities

---

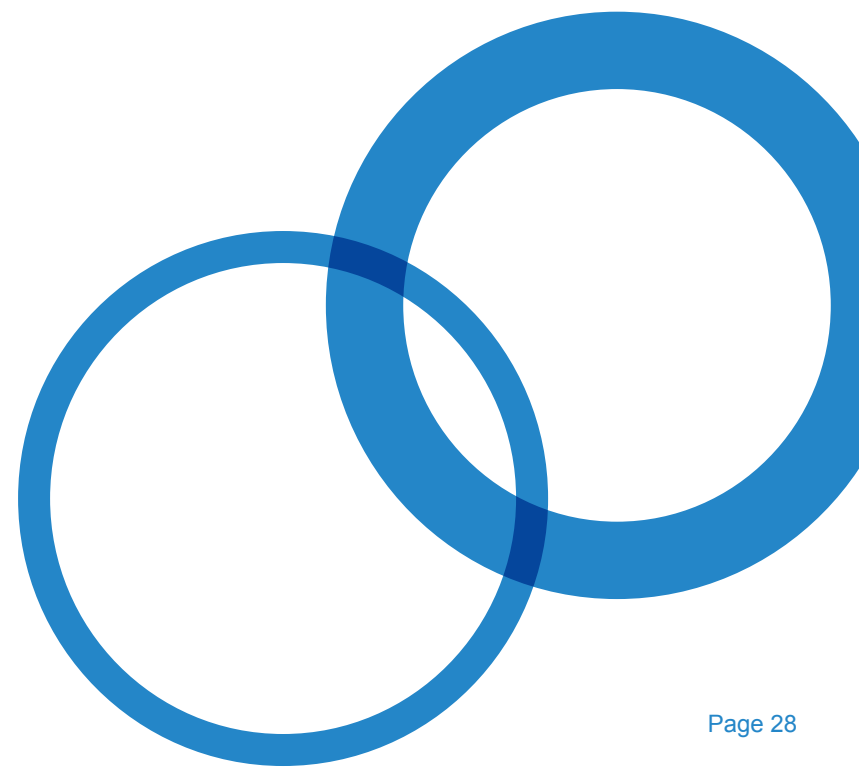
## OUTREACH

- Maintain and develop strong links with churches, schools, local councils, community representatives and organisations that function to support each parish
  - Encourage connection between the church and the community in varied and exciting ways
  - Develop fresh mission ideas in partnership within The Mission Area initiative
  - Guide and further develop our approach to evangelism
- 

- 
- Build upon the already established initiatives around our work with children and young people
- 

## SELF-DISCIPLINE, SPIRITUAL DISCIPLINE AND OWN DEVELOPMENT

- Give attention to time for personal study and renewal in all aspects of ministry and life
- Participate in the Ministerial Development Review and engage in appropriate Continuing Professional Development
- Follow an appropriate pattern of work that enables a full spiritual and personal life, as well as meeting the demands of the ministry
- Take care of your personal well-being, including physical, emotional, mental, and spiritual health, as well as building a good repertoire of spiritual and psychological strategies for resilience.



# PERSON SPECIFICATION

## QUALIFICATIONS / TRAINING

### Essential

- Ordained priest within the Church of England, or a Church in communion with it, or a Church whose orders it recognises
- Have satisfactorily completed Initial Ministerial Education
- Fully trained in and committed to safeguarding of all in the community and able to work in line with safeguarding policies

## EXPERIENCE

### Essential

- Leading a team and the church in setting and holding vision
- Evidence of collaborating effectively with other leaders in a Deanery and being someone who engages positively with the Diocese and its mission

### Desirable

- Working with multiple churches to develop vision
- Encouraging and nurturing families with young children
- Enabling lay involvement in leadership and ministry
- Working in a multi parish or Benefice context
- Effective work in a rural setting, engaging with communities and organisations outside the church

## KNOWLEDGE/ SKILLS AND COMPETENCIES

### Essential

- The ability to identify and respond to opportunities for mission in rural environments
- A person who can excite, envision and enthuse
- Leading with integrity and creativity a wide range of styles and approaches to worship
- The ability to motivate and inspire, developing new ideas and initiatives to encourage worship and growth within rural communities
- The ability to support existing Christians in evangelism and discipleship so that members of the parishes are encouraged to show God's love in action
- A good teacher, preacher and presenter of the gospel in accessible ways

## GENERAL ATTRIBUTES

### Essential

- A collaborative leader who is adaptable, resilient and positive
- Outward-facing, who naturally builds trust with others and connections with the wider community
- Faithful in prayer and grounded in Scripture and tradition
- Someone who knows where their strengths lie and humble enough to know when to seek help

### Desirable

- Enthusiasm for exploring opportunities for groups and individuals to develop their faith outside of gathered worship
- An approachable listener, with a good sense of humour

## OTHER

### Essential

- Care and development of themselves and their personal relationships, including adequate time for family life, friendship, recreation, renewal and personal health, through taking a weekly day off and their full holiday entitlement
- Full participation in the emerging Transforming Church Together coaching and wellbeing programme

*“They are a wonderful, welcoming, caring community.”*



# PARISH INFORMATION

PARISH POPULATION, ELECTORAL ROLL, USUAL SUNDAY ATTENDANCE  
AVERAGE ANNUAL OCCASIONAL OFFICE FIGURES ACROSS THE BENEFICE (2018–2023)

	Est. Population 2023	Church Electoral Roll 2023	Usual Sunday attendance 2023
Alderton	78	17	9
Easton Grey	80	0	<b>Festival Church</b>
Foxley	80	21	17
Hullavington	1350	67	32
Luckington	600	57	8
Norton	60	12	20
Sherston	1800	80	33
Stanton St Quintin	900	44	17

Baptisms	10
Weddings	10
Funerals	22



*“Group services...give us an important chance to come together for worship, and help to cement our identity as a wider group within the world-wide church: ‘Though we are many we are one body’”*

## ATTENDANCE AT FESTIVAL SERVICES

*“Our carol service allows us to escape the stress and glitz of the material Christmas.”*

	Christmas Eve + Day 2023	Carol Service 2023	Easter Day 2024	Harvest 2024	Remembrance 2024	Usual Sunday attendance 2023
Alderton	-	61	-	4	Jointly at Luckington	7
Easton Grey	69	-	20	17	Jointly at Sherston	Festival Church
Foxley	60	41	12	26	Jointly at Sherston	10
Hullavington	172	63	38	45	74	37
Luckington	75	47	52	27	54	12
Norton	36	-	17	19	Jointly at Hullavington	18
Sherston	137	114	69	47	370	36
Stanton St Quintin	98	64	69	44	51	19



*hyphen = no service held*



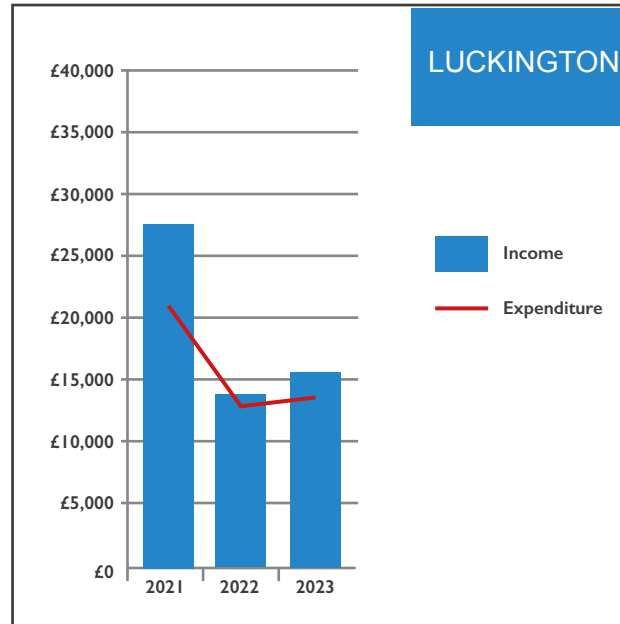
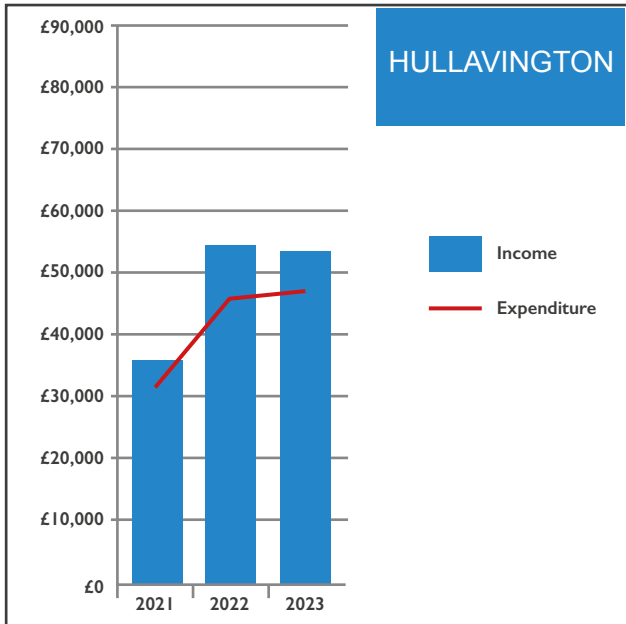
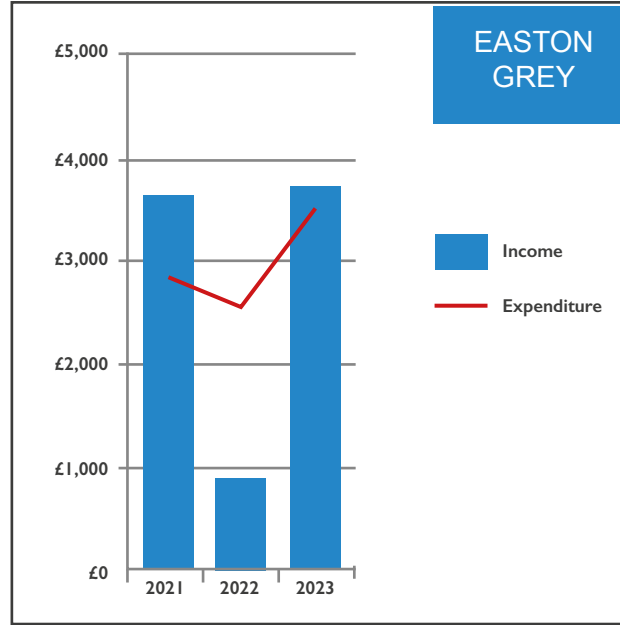
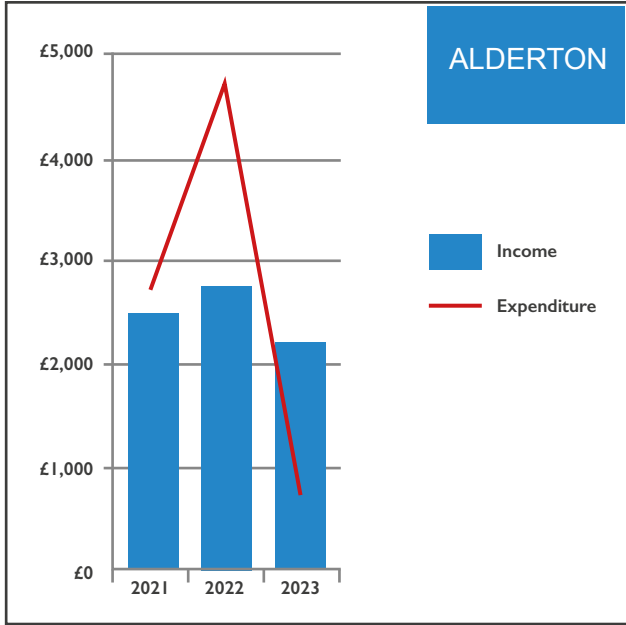
# FINANCIAL INFORMATION

## PARISH SHARE PAYMENTS 2021 - 2023

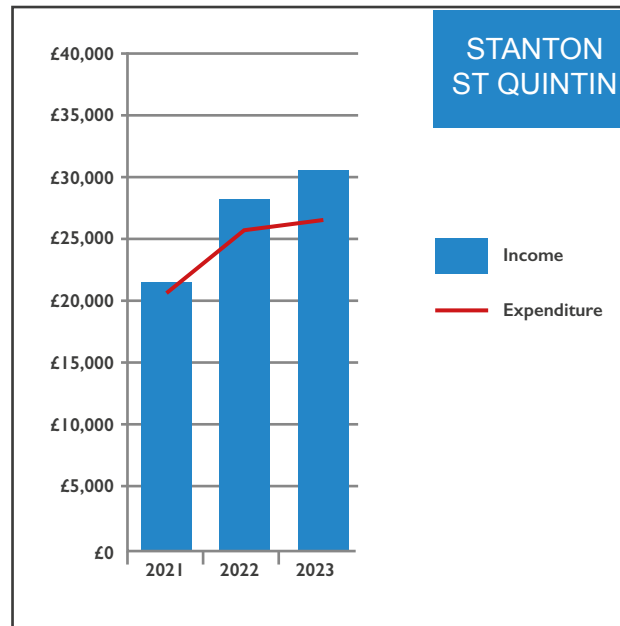
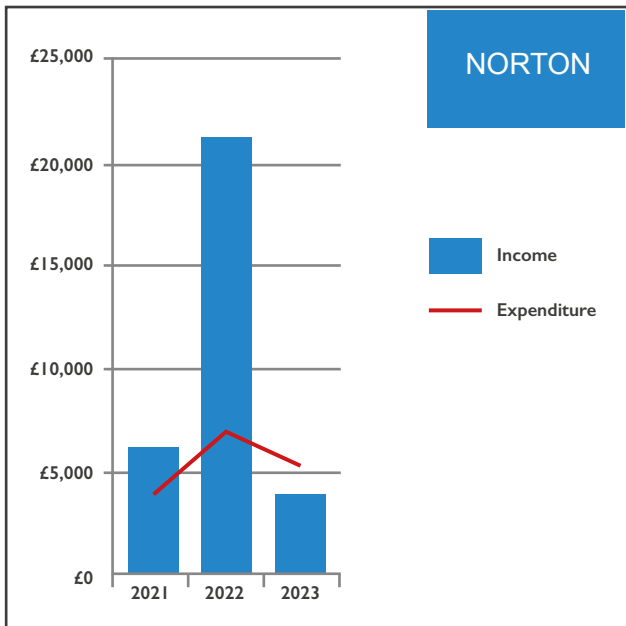
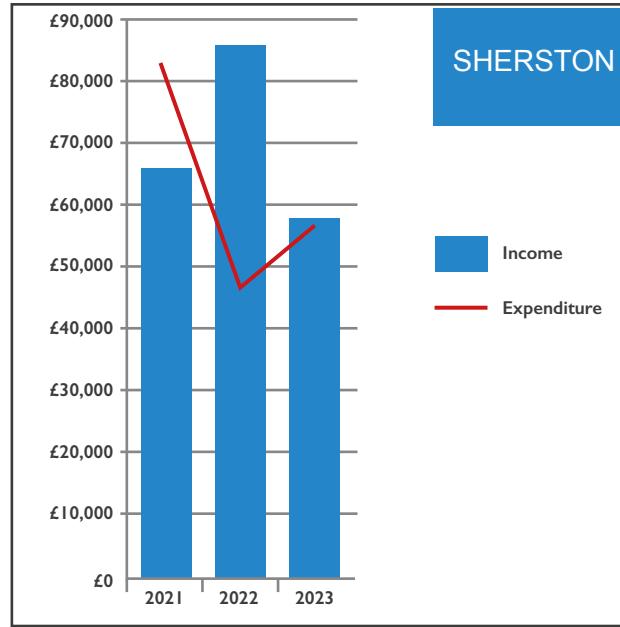
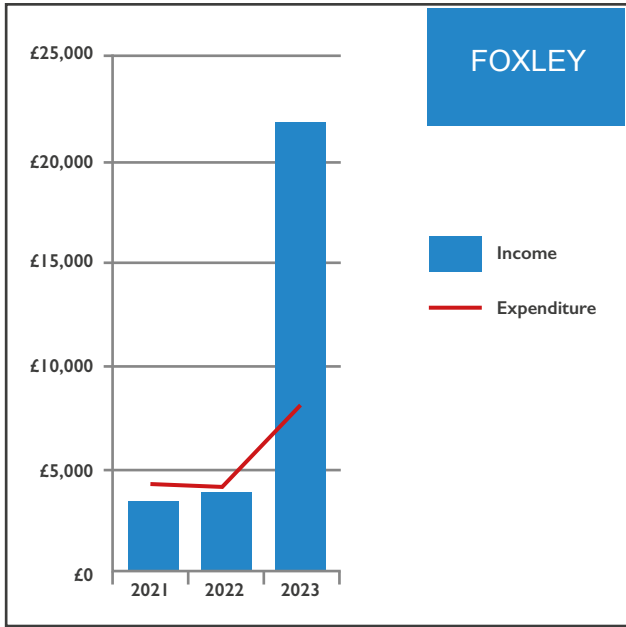
	Alderton	Easton Grey	Foxley	Hullavington	Luckington	Norton	Sherston	Stanton St Quintin	Benefice total
2021	£1,000	£1,000	£1,500	£21,450	£7,920	£3,074	£38,694	£14,310	£88,948
2022	£1,100	£1,008	£1,500	£21,990	£8,120	£2,652	£28,580	£14,670	£79,620
2023	£500	£1,008	£1,500	£22,020	£8,160	£2,656	£28,200	£14,670	£78,714



# INCOME AND EXPENDITURE 2021-2023



*“The Gauzebrook Group of churches is vital to our sense of community.”*



# CONTACT

Thank you for reading this profile. If you would like to know more about this vacancy please email the Archdeacon of Bristol, Becky Waring, [becky.waring@bristoldiocese.org](mailto:becky.waring@bristoldiocese.org) giving a contact number and she will contact you.

More information about the benefice can be found on our website: [www.gauzebrook.org](http://www.gauzebrook.org)

Please send your completed application form to [jobs@bristoldiocese.org](mailto:jobs@bristoldiocese.org).

