



DIOCESE OF BRISTOL

TRANSFORMING CHURCH. TOGETHER.

TEAM VICAR
YATE PARISH



**We are seeking a Team Vicar
who will bring creativity, courage,
and pastoral sensitivity to help
us make Jesus visible in Yate.**

CONTENTS

The Diocesan Strategy: Transforming Church. Together	Page 3
Being Clergy in the Diocese of Bristol	Page 4
A message from the Bishop	Page 5
Area Dean's message	Page 6
Christ's call - Our vision and strategy	Page 7
Yate and Fromeside mission area	Page 11
What sort of minister are we seeking?	Page 12
Person Specifications	Page 13
The surroundings	Page 15
The parish	Page 17
Governance	Page 18
The Parish Team	Page 19
A sustainable worship pattern	Page 20
Benefice outreach	Page 21
Local schools	Page 22
Vicarage	Page 23
Churches together	Page 24
St Marys Yate	Page 25
St Nicholas	Page 26
St Peter Wapley	Page 29
St James the Great, Westerleigh	Page 30
Finance information	Page 33

TRANSFORMING CHURCH. TOGETHER began in 2021 with listening to God and to one another.

From these conversations, four guiding values were discerned. Creativity, Openness, Bravery and Generosity inspire a vision and strategy which seeks transformation across the whole Diocese by the grace of God. Each Deanery and Benefice is encouraged to work out what TC.T means in their particular context – the same principles can inspire and develop mission in very different ways.

With major financial support from the national church, the Diocese is offering support and resources in key priority areas of ministry.

These include:

- ♦ Enabling parishes to discern and implement vision
- ♦ Help for benefices with evangelism and discipleship
- ♦ Support for teams running New Christian Communities
- ♦ Volunteer training
- ♦ Supporting parishes with the care and improvement of church buildings
- ♦ Investing to become a Net Zero Diocese by 2030
- ♦ Addressing the church's history on racial justice and diversity
- ♦ Developing partnerships between the church and local communities
- ♦ Investment in under 18s work
- ♦ Investment in priority community parishes, church plants/grfts and Mission Areas
- ♦ Clergy coaching and wellbeing

This is a huge and exciting vision, which we can only attempt in the strength Jesus supplies through his Spirit.

THE DIOCESAN STRATEGY

DIOCESAN SUPPORT SERVICES

The Diocesan Support Services exist to support the mission of the church. Based at the Diocesan Office to the north of Bristol and made up of 90 employees and volunteers, the DSS serve ministers, parishes and schools by expressing vision, strengthening relationships, empowering people, maximizing resources and developing structures. We offer training, consultancy and advice. We manage many structural elements of the life of the Diocese.



The Diocese of Bristol is presided over by the Acting Bishop of Bristol and Suffragan Bishop of Swindon, the Right Reverend Neil Warwick. The Venerable Christopher Bryan is the Archdeacon of Malmesbury and the Venerable Becky Waring is the Archdeacon of Bristol. The Reverend Adam Beaumont is the Associate Archdeacon.



Pastoral care of clergy is primarily the responsibility of the Bishops, assisted by the Archdeacons, Area Deans and the Clergy Wellbeing Officer. Alongside one-to-one matters as they arise, an annual clergy wellbeing survey helps to identify themes affecting clergy and their families, which are then addressed appropriately.

There are many ways in which clergy are accompanied in their ministry. Every incumbent is invited to work with a coach as part of the Transforming Church. Together strategy. The Parish Development Officer works alongside clergy where support is needed to shape vision or mission. For those in positions of first responsibility, additional tailored input and development are provided. The Mission and Ministry team offers regular opportunities for ministerial growth for clergy and laity, and the Archdeacons, together with the TC.T team, host a Church Teams Day each year, resourcing parish officers in their roles.

The Property team are progressing a programme to move every parsonage house closer to carbon net zero, which, as well as reducing emissions, should also lower utility costs. They are also available to advise clergy on any housing concerns.

Occasionally, unexpected financial pressures may arise. In such circumstances, the Archdeacons can direct clergy to appropriate avenues of assistance and, where necessary, draw upon a discretionary fund to ease financial strain. These matters are handled confidentially, and clergy are encouraged to contact the relevant Archdeacon should such needs occur.

BEING CLERGY IN THE DIOCESE OF BRISTOL

I am delighted that you are considering whether the role of Team Vicar in Yate Parish might be right for you. I hope this profile describes a Diocese and Parish within which your ministry can flourish.

I believe this is a great moment for people to join the Diocese of Bristol – both in terms of opportunities for ministry and the wider context of growth and change within the Church and local communities.

The Diocese of Bristol is a great place to serve as a vicar, with a strong commitment to supporting and empowering local church leaders. Through initiatives and investment of our mission plan, Transforming Church. Together (TC.T), the diocese is listening deeply and shaping a shared vision for a Church that is for the good of all. There is a real trust in local clergy and congregations to lead in ways that are authentic to their context. Clergy are well cared for, with access to a dedicated coaching network, wellbeing support, and leadership development. This is a diocese that values collaboration, innovation, and the flourishing of all its people.



DIOCESE OF BRISTOL
TRANSFORMING CHURCH. TOGETHER.

FROM THE ACTING BISHOP OF BRISTOL

YATE PARISH

The four churches in the Parish work together to serve the town of Yate in complementary ways, and have developed a clear sense how this is shaped in their current season of their life together. This calling is set in both the local context – a thriving town, strategically placed, and with scope for the church to have even greater influence, as well as in the wider context of the diocesan strategy of 'Transforming Church. Together'. The partnership with the neighbouring Fromeside Benefice to work together as a Mission Area has been a key part of the past strategy and is ready to be taken to the next stage of its life. As you read on you will learn much more about each of these dimensions and it is our hope that in doing so you are inspired to discern whether you may be called to serve in Yate.

As you explore this further, I know you will find the Diocese of Bristol a welcoming a supportive place to be. This is a diocese which cares deeply about the flourishing of its clergy. Please be assured that as you discern and pray about this role, I am praying alongside you that the Holy Spirit would make clear what is next for you and this Parish.

Yours in Christ



+ Neil Swindon

THE RT REVD NEIL WARWICK
SUFFRAGAN BISHOP OF SWINDON
ACTING BISHOP OF BRISTOL FROM
2 SEPTEMBER 2025

Thank you for taking the time to read this parish profile. The parish has worked hard to put it together, and it's a fantastic time to join us. As Area Dean, we want to ensure that you feel supported and encouraged in your call. Our chapter and sub-chapter meetings are a great place to share the highs and lows of life as we work together in God's Kingdom. As a Deanery, we are exploring our response to the new Diocesan Vision of Transforming Church Together (TC.T). This involves us exploring the fantastic areas of mission and ministry that are already happening, as well as identifying areas where there are challenges or opportunities for new growth.

The Deanery of South Gloucestershire and Kingswood is experiencing a significant population increase. Several new housing developments are being built across the Deanery, prompting us to proactively explore how we can respond. Yate has also seen a substantial population increase, and the parish has some well-thought-out mission plans in place. The parish has begun to consider its response to the Diocesan Vision and Strategy, and we hope that this work will contribute to the mission action plan we are developing for the Deanery.

Our Deanery Synods focus on how we are responding to the TC.T strategy. We've had several speakers from the various diocesan teams to support parishes in their engagement with TC.T. As parishes engage, we provide a space for discussion and reflection on the speaker's insights, which we can then share with our PCCs. You'll find that the Deanery is a supportive environment.

We have a number of ways of supporting you in ministry as a Priest in the Deanery. We try to support in areas like grant writing, governance administration and safeguarding administration. Our senior administrator will support PCCs in these areas and help provide guidance and training.

Yate holds an important place in the Deanery and we believe that the opportunity for mission is not only exciting but significant. The Church has openings to build upon the role it has within the town shaping the spiritual and worship life of the area. As we build towards our Deanery Mission Action Plan, we believe that Yate can provide us with insight and best practice.

REVD DAVE BRAE, AREA DEAN,
KINGSWOOD AND SOUTH
GLOUCESTERSHIRE DEANERY

AREA DEAN'S MESSAGE

A Community prepared for the next chapter.

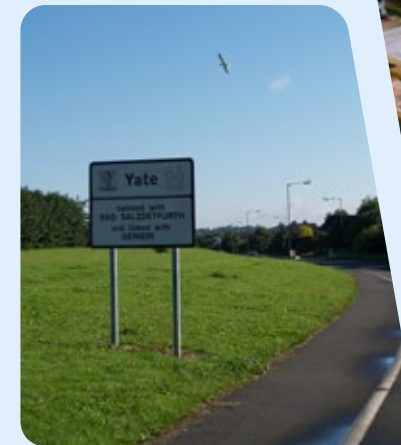
In 2020 we set a five year vision under the banner “Making Jesus Visible”. We worked with our Mission Area Partners to define the Journey of Discipleship. This is a pathway which identifies stages of the faith journey and encourages a deepening of faith, across four stages (see infographic on page 10). The 2020 – 2025 vision itself was implemented in part despite the disruption of Covid.

We are a single parish with four churches with an unusual governance structure. In the past this has caused some issues. In response to this we undertook a full governance review led by Archdeacon Christopher. This allowed us to reform our budgeting and decision-making processes, making our governance transparent, clear and accountable. All the recommendations of the review have now been implemented or will be within the next month. This process culminated in the publication of the parish handbook, containing a code of conduct, decision making process and committee structure. We are confident that the ground is now ready for our next chapter of mission and ministry.

A PLACE OF OPPORTUNITY FOR MISSION AND A COMMUNITY YEARNING TO REACH OUT

We have excellent links with Yate Town Council and have worked with them on several projects in the last five years. Including;

- Welcoming and integrating Ukrainian families
- Warmer spaces programme
- Heritage events with Yate heritage centre



CHRIST'S CALL – OUR VISION AND STRATEGY

We have links with two social housing providers locally and work with Ladden Garden Village residents' group on local estates.

We have links with two secondary schools and provide weekly collective worship in our own CofE School.

St Mary's hold a weekly craft group.

St Nix (St Nicholas) acts as a hub for many community groups especially our weekly Lunch Club.

St James acts as a hub for the whole village, holding a weekly coffee morning and breakfasts.

Our Vision is to continue to build on these links and encourage people to deepen their faith on the journey of discipleship.



A PLACE OF DISCIPLESHIP

We currently have 4 home groups and hold regular Alpha, Puzzling Questions and Pilgrim courses. Each Lent and Advent we hold a course in conjunction with our Mission Area Partners in Fromeside.

Our Future Vision:

We have recently begun a vision process to identify our strengths and weaknesses in mission, with overall positive results. We have begun to discern where God is calling us in the future.

1: Energised by Faith	74%
2: Outward Looking	67%
3: Seeks to find out what God wants	72%
4: Faces the Cost of Change	70%
5: Operates as a Community	66%
6: Makes Room for All	80%
7: Does few things well	75%

The Diocese of Bristol has set four main strategic goals. In the future we hope to realise these in Yate by:

Cultivating belonging in our communities by nurturing open, generous, creative, and brave partnerships with all our neighbours, and being more inclusive.

In Yate we want to realise this goal by:

- ♦ To capitalise on our good connections in the community and effectively use these connections for mission. Encouraging people on their journey of discipleship. To care for each other within the church family and expand that care to those in our community groups.

Introducing people to the powerful message of Jesus by releasing, empowering and equipping our leaders and parishes to reach out and spread the Good News.

In Yate we want to realise this goal by:

- ♦ To improve the quality of worship across all worship styles both traditional and modern, creating a diverse offering to our community.
- ♦ Grow in spirituality and prayer by increasing the number of people involved in home groups and prayer activities.
- ♦ Improve our all-age worship in St Mary's, Messy Church in St Nix and begin All Age services in St James.
- ♦ To continue our online outreach through our livestreams and Facebook presence.



Being recognised as a force for Gospel change by working within our communities to relieve hardship and amplify unheard voices.

In Yate we want to realise this goal by:

- ♦ To provide a safe and caring space through our community groups especially in St Nix acting as a community hub.
- ♦ To continue to reach out to those in our community who are in need, building on our many community partnerships. Such as Yate Town Council, South Glos Council, Live West and Bromford housing, Abbotswood and Ladden garden village residents associations.

Building an environmentally sustainable diocese by encouraging worshippers to hear the cry of the Earth and work with us towards net zero carbon emissions by 2030.

- ♦ To continue and expand our Eco Church work moving from the Silver to Gold in St Mary's and Bronze to Silver in St James, St Peters and St Nix.

Securing the future of the Church by working with partners to generate funding, which maximises the impact of our transformation.

- ♦ Build on our recent stewardship campaign and to set missional budgets across the parish, enabling mission to be funded in a sustainable way.



The Yate and Fromeside Mission Area is a network of eight local Anglican Churches serving parts of South Gloucestershire.



The churches signed a covenant in January 2018, committing the members of the Mission Area to:

- ♦ Building relationships within the community
- ♦ Being generous, gracious and welcoming in all that they do
- ♦ Being honest and open with each other
- ♦ Changing attitudes, practices and behaviours to advance God's Kingdom here
- ♦ Encouraging and affirming each other
- ♦ Sharing with and learning from each other - including events and resources as appropriate
- ♦ Loving each other with understanding and respect

Since then the Mission Area has seen a range of activities, such as:

PRAYER: 80 people from all eight churches across the Yate and Fromeside Mission Area attended a Mission Area prayer walk along the Frome Valley Walkway.

COLLABORATION: Messy Church has started in Fromeside with help from the existing Messy Church in Yate.

MISSIONAL COMMUNITIES: Four small missional communities have started around Yate and Fromeside, establishing Outreach and Mission Teams in each of the parishes.

YOUNG PEOPLE: Yate are focusing on the housing development and youth and schools in the area. In September 2018, the first Mission Area youth event, Acts for Eden, took place with 36 young people and 16 helpers.

YATE AND FROMESIDE MISSION AREA



Our Team Rector retired in Autumn 2024 after ten years of ministry in Yate. After serving here for eight years, our Team Vicar was appointed to a new role in Wales. We have recruited a new Team Rector, the Rev'd Peter Huxtable and now seek a Team Vicar for this new season of ministry.

WHAT SORT OF MINISTER ARE WE SEEKING?

QUALIFICATIONS/ TRAINING

Essential

- ♦ Ordained priest within the Church of England, or a Church in communion with it, or a Church whose orders it recognizes.
- ♦ Have satisfactorily completed Initial Ministerial Education.

Desirable

- ♦ Willingness to engage in further training.
-

EXPERIENCE

Essential

- ♦ Impactful competence in the core ministry of a priest who has been selected as incumbent status.
- ♦ Deliver worship, preaching, evangelism and discipleship provision which transforms lives and the church.
- ♦ Demonstrate leadership which shares ministry as appropriate with others.
- ♦ Effective ministry within schools and an all-age context.

Desirable

- ♦ Impactful ministry in areas of new housing.
-

PERSON SPECIFICATION YATE TEAM VICAR

**KNOWLEDGE/
SKILLS
AND
COMPETENCIES**

Essential

- ♦ The ability to work collaboratively with colleagues to strengthen the church in building upon and implementing a vision and strategy which identifies and responds to opportunities for mission.
- ♦ Conducting a ministry that encourages new people to Christian faith, including making the most of opportunities provided by the occasional offices.
- ♦ Equip existing Christians in evangelism and discipleship so that members of the church are encouraged to show God's love in action.

Desirable

- ♦ An ability to make and build on links with individuals and community organisations whose involvement with the Church is limited.

**GENERAL
ATTRIBUTES**

Essential

- ♦ Someone whose identity is grounded in a lively faith in Jesus, with a passion for sharing God's love.
- ♦ A commitment to full engagement with Deanery and Diocese, including the opportunities afforded by 'Transforming Church. Together'.
- ♦ Fully trained in and committed to safeguarding the whole community and able to lead in nurturing a safeguarding culture and the implementation of safeguarding policy and practice.

Desirable

- ♦ The willingness to lead with collaborative oversight in areas of ministry, as appropriate to the successful candidate's gifting.
-

Yate is a town in South Gloucestershire at the southwest extremity of the Cotswold Hills 12 miles (19km) northeast of the City of Bristol. At the 2021 census the population was 28,351. The town of Chipping Sodbury (population in 2021 was 8025) borders on Yate. Yate developed from a village to a new town in the 1960s, partly as an overspill or commuter town for the city of Bristol.

The town is surrounded by countryside yet is strategically located close to the M4 and M5 motorway networks.

We have connections to Swindon, Reading and London via the M4 and the Southwest and Birmingham and further north via the M5. There are direct rail connections to Bristol and Gloucester, a bus that goes to Cribbs Causeway (an out-of-town shopping centre) and then goes to the main hospital in the area at Southmead.

Construction of a pedestrian shopping centre of around 100 shops began in the 1960s. This has been further developed over the years and the vast majority of the shops are still in operation. A Youth Centre called the Armadillo opened in 2011. There is also a large Leisure Centre.



THE SURROUNDINGS

The town has several parks and areas of open spaces. The largest of these is Kingsgate Park, which has an adventure playground, there is also has a skate park at Peghill. The Common on Westerleigh Road is used for dog walking, nature watching, kite flying, circuses and fairs.

Yate has an abundance of local sports facilities including athletics, football, hockey and cricket.

Yate and Chipping Sodbury had been earmarked for 5,000 new homes to be built by 2026. This plan is well underway with the building of Ladden Garden Village to the north of Yate. A variety of sized houses have been built and a new Sainsburys Local has opened. We are promised to have a primary school and a community centre hopefully by the end of 2025.

There are 5 Doctors' surgeries: 3 in the centre of Yate; 1 near St Nicholas Church; and the other in North Yate

There are 5 residential Care homes in the area including 1 which has opened recently in the new development at Ladden Garden Village.



THE PARISH OF YATE CONSISTS OF 4 CHURCHES.

St James, in the village of Westerleigh

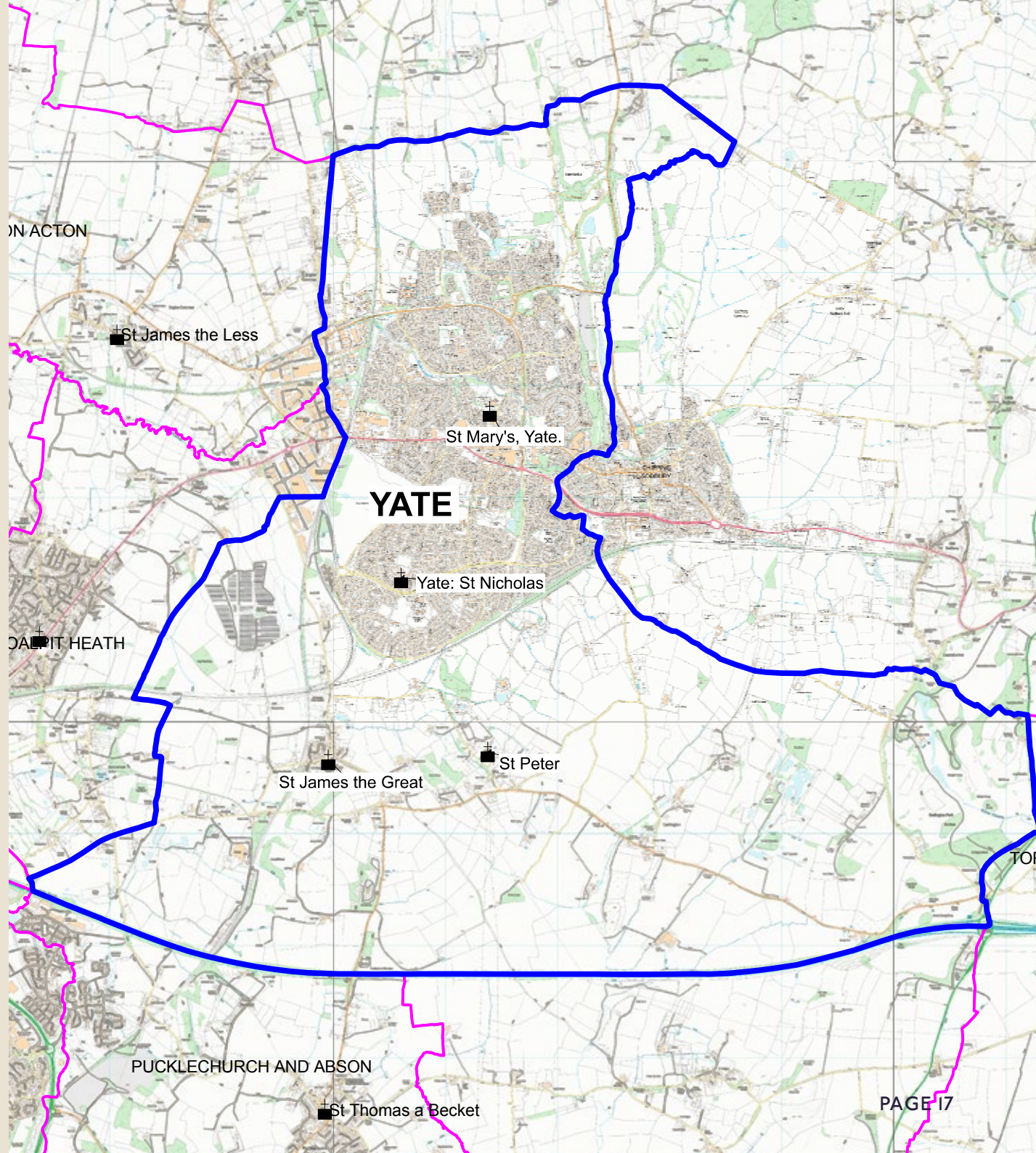
St Mary's in central Yate

St Nicholas, Abbotswood in South Yate
(also known as St Nicholas Family Centre
and St Nix)

St Peter's in the hamlet of Wapley

The parish is part of the Deanery of
Kingswood and South Gloucestershire
in the Archdeaconry of Malmesbury and
within the Diocese of Bristol. The churches'
shared, single Electoral Roll stands at 274.

THE PARISH





The PCC meets four times a year and the PCC has a Standing Committee which also meets four times a year. The PCC deals with the parish finances, grant applications, faculty endorsements, Health and Safety and Safeguarding policies. The PCC also deals with other general parish business.

Each church has a District Church Council which are really sub committees of the PCC. Each church has a Finance Officer. The committee meets 6 times a year and looks after the fabric and maintenance of their church.

The District Church Councils are co-chaired by clergy and Churchwardens.

GOVERNANCE

The team will have two stipendiary clergy – the Team Rector and the Team Vicar. We have 1 further Self-Supporting Minister (SSM) and 2 Licensed Lay Ministers.

We have a Parish Administrator who works for 20 hours a week this work also involves being the PCC secretary.

Yate has a long history of training curates, and we hope that our future clergy may also be potential training incumbents.

TEAM RECTOR

Rev Peter Huxtable, to be licensed in Spring 2026

ST MARY'S WARDENS

John Cornforth & Claire Haywood

ST JAMES WARDENS

June Powell & Michaela Mackenzie

ST NIX WARDEN

Helen Belcher

ST PETERS WARDEN

Henry Shiles

PARISH TREASURER

Steve Lord

LAY MINISTERS PTO

Wully Perks & Norma Felsted

HALF TIME PARISH PRIEST (INTERIM)

Rev Sue Gent

ASSOCIATE MINISTER SSM

Rev Wanda Morris

LLM IN TRAINING

Paul Belcher

PARISH ADMINISTRATOR

Pam Brown

PARISH BOOKEEPER

Christine Dolton

ST NIX ADMINISTRATOR

Sue Harrison

THE PARISH TEAM

ST MARY'S

	8:15 am	10:30 am	6:30 PM
1st Sunday	Holy Communion	All Age Service of the word	Praise (Non-Eucharistic)
2nd Sunday	Holy Communion	Holy Communion	Praise (Non-Eucharistic)
3rd Sunday	Holy Communion	Service of the word	Praise (Non-Eucharistic)
4th Sunday	Holy Communion	Holy Communion	Praise (Non-Eucharistic)
5th Sunday	Parish Communion		

ST NIX, ST JAMES & ST PETERS

	ST NIX 9:30AM	ST JAMES 11AM	ST PETERS 6:30 PM
1st Sunday	Holy Communion	Holy Communion	1662 BCP Evensong
2nd Sunday	Service of the Word	Service of the Word	1662 BCP Communion
3rd Sunday	Holy Communion	Holy Communion	1662 BCP Evensong
4th Sunday	Service of the Word	Service of the Word	1662 BCP Communion
5th Sunday	Parish Communion		

A SUSTAINABLE WORSHIP PATTERN



MISSION AREA

Yate Parish and Fromeside Benefice became a Mission Area in 2018. Since then we have worked together extensively. We currently have an associate minister for discipleship based in Coalpit Heath who works across the Mission Area. We plan discipleship and mission projects together and offer mutual support with services.

YOUTH WORK

There are services for the 0 to 5 year olds each week during term time Praise 'n' Play, A monthly Who Let the Dads Out and Messy Church.



HOUSE GROUPS

There are several Bible Study groups that meet throughout the Parish. These groups find mutual support whilst learning what it is to be living as a Christian family.

BAPTISM PREPARATION

In 2023 we baptised 25 children.

WEDDINGS

We run a Marriage Preparation day in March in which couples are invited to attend and then this is followed on by clergy visiting couples in preparing for their marriage service. We held 5 weddings in 2023.

FUNERALS

These are booked through the Parish Office and then shared across the Parish by the clergy and LLMs. IN 2023 we took 33 funerals in church and 12 at the Crematorium.

BENEFICE OUTREACH

Members of the Clergy and lay ministers and our Youth Worker maintain strong links with local schools and take many assemblies (Collective worship).

St Marys CofE (Voluntary Aided) School continues to be supported by eight foundation and parent governors who have been nominated by the PCC and elected to serve by the Diocesan Board of Education.

There are a total of 10 primary schools in the area and three secondary schools. The three secondary schools combine together to form one sixth form. There is also a Special School close to St Nicholas Church.

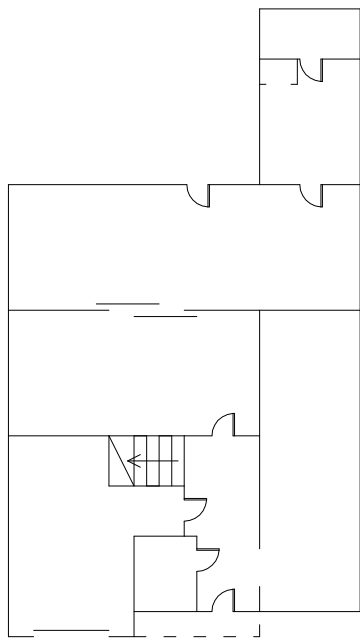
We also support Regenerate who organise collective worship in all our schools. This work includes Christian events for the younger people of the parish.



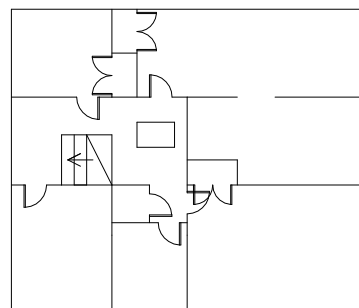
LOCAL SCHOOLS



The Team Vicar's house is situated in Clayfield, Yate, in a strategic location for some of the recent housing developments in the area. It is a comfortable 4 bedroomed detached house with solar panels and a solar diverter on the hot water tank.



GROUND FLOOR



FIRST FLOOR

VICARAGE



Church leaders from the Yate and Sodbury area meet informally and share a passion for mission. They organise activities such as The Good Friday United Act of Witness in Yate Shopping Centre and Chipping Sodbury High Street.

There are many churches in the Yate area a Methodist Church, a Baptist Church (in the centre of Chipping Sodbury), Gateway Revival Grace Church and Christ the Rock (A Christian fellowship).



CHURCHES TOGETHER

As part of reaching out and making Jesus visible, St. Mary's Church offers three Sunday services, providing opportunities for people to experience different styles of worship.

8.15am service is a Said Holy Communion

10.30am service provides a mixture of All-age, Sung Holy Communion, Parish Communion, and Baptisms within the service

6.30 Praise Service provides a time of fellowship for churches across the areas of Yate and Chipping Sodbury, including more contemporary songs, often accompanied by a live Parish band, as well as incorporating a range of speakers, talking on a variety of topics from scripture and a time of reflection and prayer.

We continue to welcome and respond to an ever growing and diverse community.

We are located in the heart of the original village of Yate of which very little remains.

The building dates back to the 13th Century and was much altered by the Victorians. A Grade I Listed building, it has a 92ft Norman tower looking over the town, as well as a large churchyard which contains 26 Grade Two Listed tombs (mainly box tombs.) In the 1970s, chairs and a modern organ were installed.

Recently, St. Mary's has installed a new sound system, which has provided the space with improved sound and has made the church more accessible. We would like to host local events and for the community to hold concerts. We are working towards installing an improved kitchen and accessible toilets in the church to help meet the needs of all.

A wide range of groups use the church midweek – St Mary's Craft Group, Mothers' Union, groups for pre-school children and groups for parents/carers, Good Afternoon Choir and many more. St Mary's has also welcomed and made great connections with the Ukrainian Community in the area.

ST MARY'S CRAFT GROUP

This group meets every Wednesday morning. It is a thriving group of ladies and a couple of men who enjoy the beautiful venue to craft, play games and most importantly, to talk together. Over the years there have been many projects that the group have worked on together, including Church banners and support for local charities. The average attendance is 35 and made up of Parish and local community members.

ST MARY'S YATE



St Nix is a small, prayerful and welcoming Church making Jesus visible within the local community. It is located in Abbotswood, approximately 2 miles from the centre of Yate.

We strive to support and engage the community by holding events throughout the year, opening our doors with a loving, warm welcome.

We are a vibrant Church and worship at St Nix brings together modern music and instruments together with more traditional hymns, welcoming musicians from other local churches on a regular basis. We use recorded music if required. Live Streaming the Sunday service provides a positive and welcome link to those who are unable to attend in person. Belonging to a diverse, four church Parish enables us to host events and services to widen our scope in reaching the wider community in the name of our Lord.

ST NICHOLAS (ST NIX)



MONDAY LUNCH CLUB

This was started by members of St Nix in 2017 and has been running successfully ever since. It meets every Monday from 12 – 2pm where people enjoy soup and pudding together with time to chat. All are welcome.

FRIENDSHIP AND EXERCISE CLASS

Together with the support of an external coach, St Nix hosts simple and stimulating exercise on a Monday morning. Everyone is welcome and are also able to enjoy a drink and a chat. A number stay on to join in the Monday Lunch Club.

REGENERATE (LOCAL CHRISTIAN SCHOOLS WORK CHARITY)

St Nix hosts local schools for special services during the year.

BOOK GROUP – HELD MONTHLY AT LUNCHTIME

MESSY CHURCH

This has been running successfully for 14 years, and we are keen to develop it further, recognising for some, it is their only Church contact and therefore it must meet all the needs of discipleship and worship. We meet monthly, having each session based on a bible theme or passage and spend some time together exploring it through story, song and activities, finishing with a shared meal. We have a good reach to families throughout the Parish.

PRAYER AND STUDY GROUPS

Throughout the year there are opportunities to join study and prayer groups. All are welcome, to help us strengthen our journey of faith and discipleship.

CHURCH ACTIVITIES AT ST NIX



Attached to the church building is another building serving a Youth Club, plus Young People Support and Education. These projects are run by the local authority.

Apart from providing regular income to support the mission of the Church, people of all different ages and backgrounds come through our doors into a warm and welcoming, Christian environment.

We have excellent parking facilities, and bookings include small and large groups on a short- and long-term rental basis.

The types of hirers are quite diverse in content and frequency, typical groups are :

Slimming World

Choral Society

Rock Choir

Rhythm Mix

U3A - Pilates

U3A-Making Music for Fun

Ballet Group

Little Sparks (Toddlers)

Pre-school

Play Scheme

Abbotswood residents drop-in Support Centre

MIDWEEK ACTIVITIES AT ST NIX

Wapley is a hamlet, just over two miles from the centre of Yate and is known as the Church on the hill.

Services are held on Sunday afternoons, in winter at 6.30pm and in summer at 4.30pm, We alternate between Holy Communion and sung Evensong, from the Book of Common Prayer.

St. Peter's church is a grade II* listed building; part of which dates back to the 13th century. In the Chapel is the unique tomb of John Codrington who is said to have been a standard bearer at the Battle of Agincourt in 1415.

ST PETER WAPLEY



St James is seen by both the congregation and community as being at the centre of the village. We hold a very popular coffee morning for villagers each week. We participate in village life holding stalls at various events through the year such as the village fayre and carols in the pub. We hold a monthly breakfast in the spring and summer and a Christmas fayre with our very popular wreath making events.

The tower is popular among visiting ringers for its accessibility on the ground-floor as well as having bells that are lovely to ring. Two or three times a year we get requests from bands doing a tour of local towers or wanting to ring a peal. One group of regular ringers meet on the first and third Mondays in the month. Another group meet once a month on a Thursday morning to ring hand bells followed by tower bells. Both groups are keen to recruit new ringers.

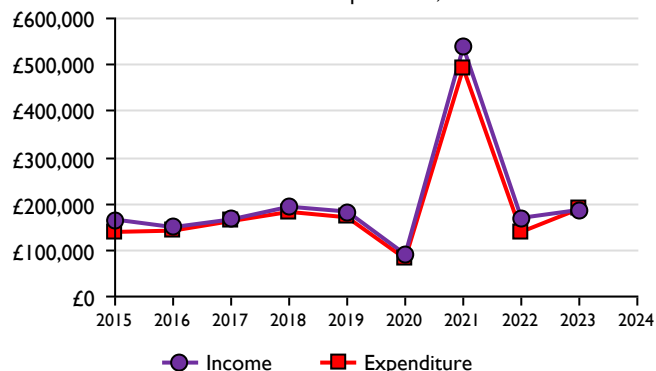


ST JAMES THE GREAT, WESTERLEIGH

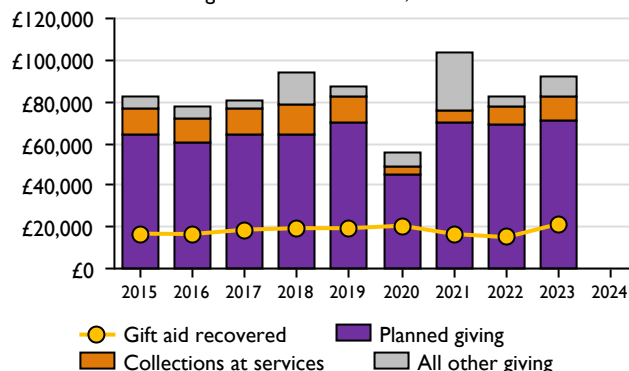


Finance Dashboard for the Parish of Yate in the deanery of KINGSWOOD AND SOUTH GLOUCS'

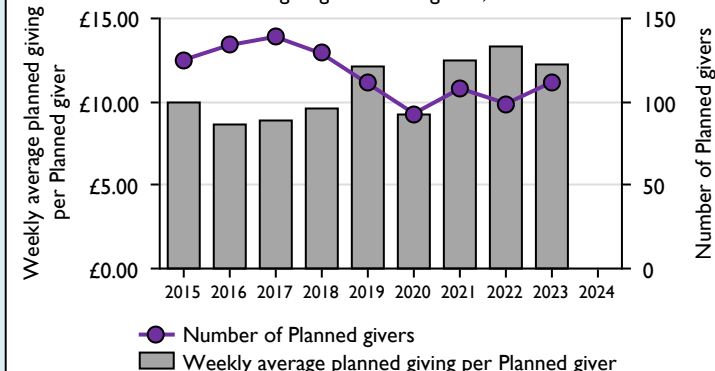
1. Total Income & Total Expenditure, 2015-24



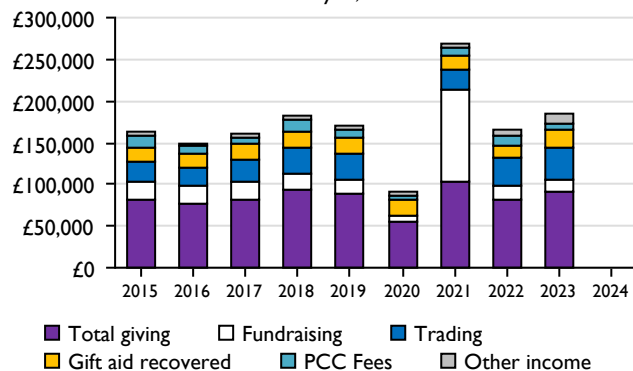
2. Giving & Gift aid recovered, 2015-24



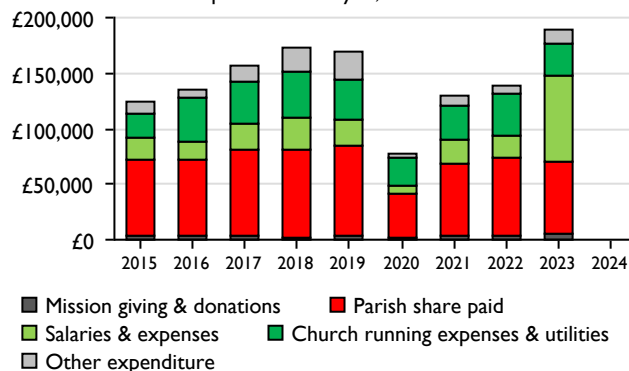
3. Planned giving & Planned givers, 2015-24



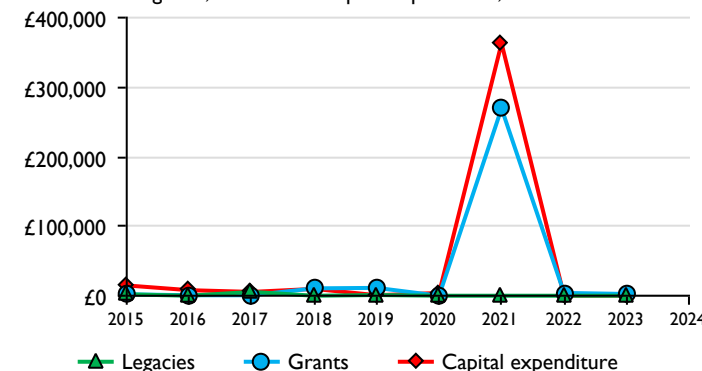
4. Income Analysis, 2015-24



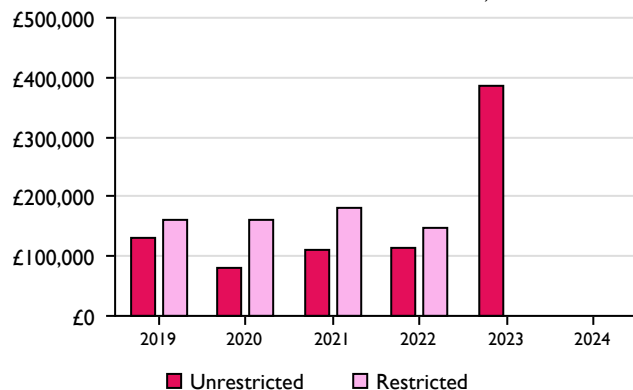
5. Expenditure Analysis, 2015-24



6. Legacies, Grants and Capital expenditure, 2015-24



7. Net Current Assets and Investment Balances, 2019-24



Weekly average planned giving per planned giver (2024)

Parish: nan
Diocese: 0.0

Number of churches in parish (2024): 4

Parish code: 550101

Notes & definitions

This dashboard contains figures as submitted by churches currently in the parish; gaps may be the result of missing returns.

Graph 2 shows a detailed breakdown of the **Total giving** figure in graph 4.

Graph 3: **Planned giving** = Tax efficient planned giving + Other planned giving; **Planned givers** = Tax efficient planned givers + Other planned givers.

Graph 4 shows income other than grants and legacies.

Graph 4: **Total giving** = Tax efficient planned giving + Other planned giving + Collections at services + All other giving, including special appeals.

Graph 4: **Other income** = Dividends, interest, income from property + Any other income.

Graph 5 shows expenditure other than capital expenditure.

Graph 5: **Other expenditure** = Fund-raising activities + Mission and evangelism costs + Cost of trading + Other expenses.

Graph 5: **Running expenses & utilities** also includes governance costs.

Graphs 1-6: Unrestricted and Restricted amounts have been combined.

For further definitions please see the guidance notes attached to the Return of Parish Finance:

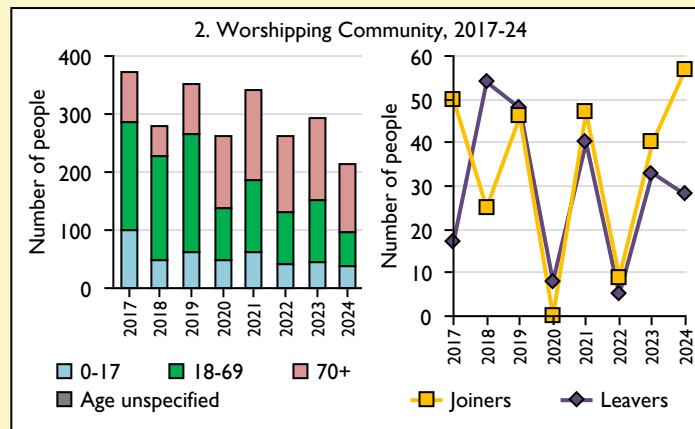
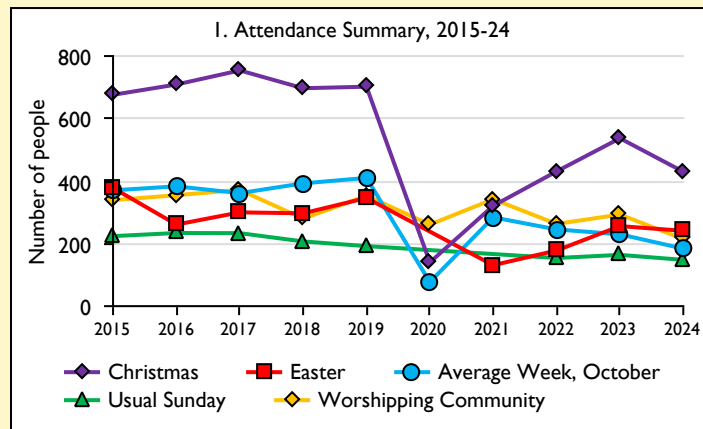
Variations from year to year may be the result of changes in the number of churches that submitted returns, or changes in parish/benefice structure.

Number of churches included in returns: 2015 4;2016 4;2017 4;2018 4;2019 4;2020 4;2021 4;2022 4;2023 4.

Produced by Data Services, Church House, Great Smith Street, London SW1P 3AZ. Date of production: 15/04/2025.

Every effort has been made to ensure that data are reliable. We would be pleased to be notified of any significant errors or omissions by email to statistics.unit@churchofengland.org

SfM Dashboard for the Parish of Yate in the deanery of KINGSWOOD AND SOUTH GLOUCS'



Parish Census and deprivation summary

Parish population (2021): 32775

	Parish	Diocese	National
% aged 0-19	23%	23%	23%
% aged 20-44	32%	37%	33%
% aged 45-69	31%	28%	31%
% aged 70 & over	14%	11%	14%
% Christian	43%	40%	46%
% non-Christian religion	2%	7%	11%

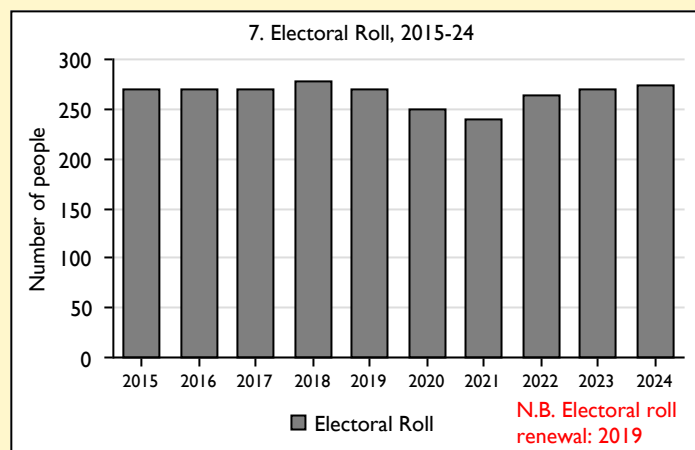
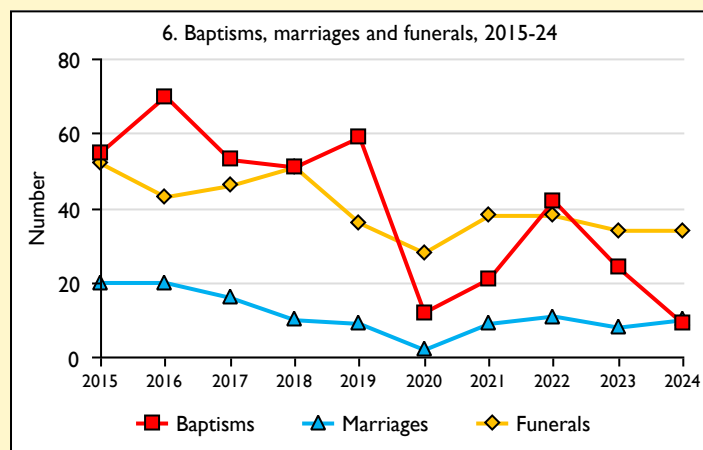
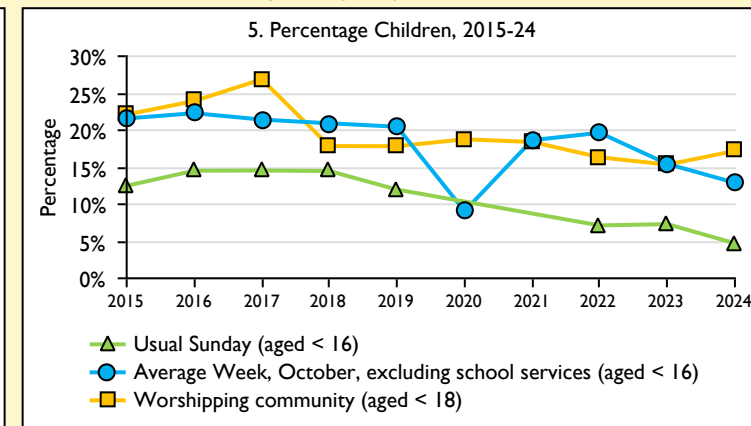
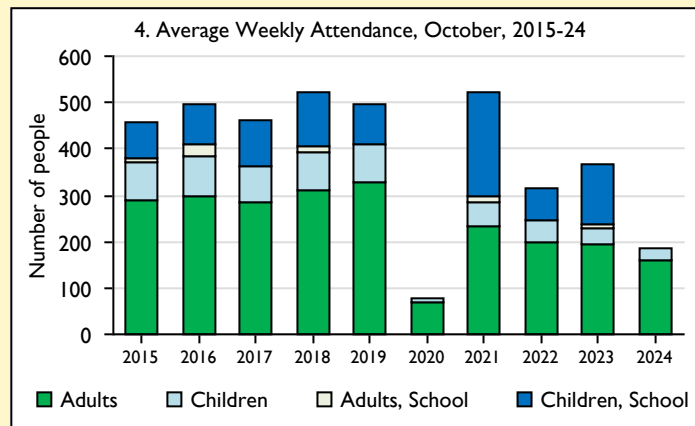
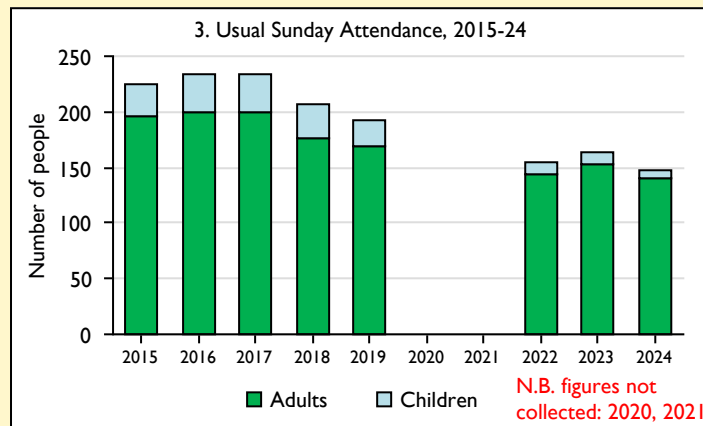
Parish deprivation rank (IMD 2019): 8562

(1=most deprived parish in the Church of England, 12,178=least deprived)

For more detailed census & deprivation info: see <http://arcg.is/1RaS4CS>
<https://www.churchofengland.org/about/data-services/> and
<http://www.cuf.org.uk/shinealight/>

Number of churches in parish (2024): 4

Parish Code: 550101



This dashboard contains figures as submitted by churches currently in the parish

Attendance statistics: taken from annual Statistics for Mission returns.

Average weekly attendance: attendance at Sunday and midweek church services & fresh expressions in October; Figs 1 & 5 do not include attendance at services for schools.

Easter: Easter Eve & Easter Day; Christmas: Christmas Eve & Christmas Day.

Baptisms: all baptisms & thanksgivings.

Marriages: marriages and services of prayer & dedication after civil marriages.

Funerals: those held in church & at crematoria/cemeteries.

Because of pandemic-related church closures, Easter figures were not collected in 2020.

Census data: taken from the 2021 national Census.

Deprivation statistics: IMD taken from the English Indices of Deprivation, published by the Ministry of Housing, Communities & Local Government, Sept 2019.

The above statistics have been mapped onto parish boundaries so are approximations.

For more information, see: <https://www.churchofengland.org/about/data-services/>

Variations in attendance from year to year may be the result of changes in the number of churches that submitted returns, or changes in parish/benefice structure.

Number of churches included in returns: 2015 4;2016 4;2017 4;2018 4;2019 4;2020 4;2021 4;2022 4;2023 4;2024 4.

Produced by Data Services, Church House, Great Smith Street, London SW1P 3AZ. Date of production: 15/04/2025.

Every effort has been made to ensure that data are reliable. We would be pleased to be notified of any significant errors or omissions by email to statistics.unit@churchofengland.org

NEXT STEPS

Thank you for reading this far, we are praying that that God is putting a deep sense of call into the heart of the people who will be our next Team Vicar.

If you would like an informal conversation about this role please contact

The Ven Christopher Bryan,
Archdeacon of Malmesbury,
christopher.bryan@bristoldiocese.org.

To apply for this role, please download and complete the application form from our website www.bristol.anglican.org and email it to jobs@bristoldiocese.org.



DIOCESE OF BRISTOL

TRANSFORMING CHURCH. TOGETHER.

Diocesan Office, First Floor, Hillside House, 1500 Parkway North, Stoke Gifford, Bristol BS34 8YU 0117 906 0100 | www.bristol.anglican.org
The Bristol Diocesan Board of Finance Limited | Reg. in England: Charity 248502, Company 156243

