



JOIN US AT THE
DIOCESE OF BRISTOL

APPLICATION PACK

Rector - Gauzebrook Group of Churches



FOXLEY 2
MALMESBURY 4 $\frac{1}{2}$

SHERSTON $\frac{1}{2}$
TETBURY 5 $\frac{3}{4}$

NORTON 2 $\frac{1}{4}$
HULLAVINGTON 4 $\frac{1}{4}$
CHIPPENHAM 10 $\frac{3}{4}$

CONTENTS

Message from the Bishop	Page 4
Area Dean's Letter	Page 5
The Gauzebrook Group of Churches	Page 6
The Deanery	Page 7
Welcome	Page 8
The Story of our Benefice	Page 10
Parish Life	Page 11
Worshipping Together	Page 12
Serving our Schools	Page 13
Working Together	Page 14
Moving Forward	Page 15
Our Team	Page 16
The Rectory	Page 19
Our Parishes and Churches	Page 21
Pattern of Worship	Page 30
Role Profile	Page 31
Person Specification	Page 33
Parish Information	Page 35
Financial Information	Page 39
The Diocese of Bristol	Page 43
Parish Contact	Page 45



FROM THE BISHOP

Gauzebrook is a dynamic, missional multi-parish benefice with a strong sense of purpose. It sits within North Wiltshire deanery and a mission area that is committed to an innovative approach to rural ministry.

This group of churches work together well. They have a long history of faithful presence and engagement in their communities and enjoy their call to be the parish churches for each of the villages they serve. Gifted leadership in recent years has ensured that each of the church buildings is fit for worship and mission in 2024.

We seek someone to build on the strong start to the discernment of the vision for the benefice and lead them into the next phase of their lives as vibrant, outward-looking Christ-centred, communities.

I hope you will enjoy reading more about this benefice and the potential this role offers. This is a time of new opportunity under God in the Diocese of Bristol. Following Jesus, serving others and transforming communities with openness, creativity, generosity and courage lie at the heart of our Diocesan strategy, Transforming Church. Together.

As you discern your call to serve in Gauzebrook benefice, we pray with you as a diocese:

God of the Way, you call us to leave familiar places and to set out on new paths.

Enlarge our vision of your work in the communities we serve,

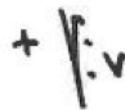
speak to us through the people we encounter and open our hearts to your love.

Give us courage and boldness to engage together in this time of prayer and discernment;

and by your Holy, life-giving and creative Spirit, renew your church in prayer and service,

and in sharing the Good News of Jesus Christ, in whose name we pray.

Amen



Rt Revd Vivienne Faull
Bishop of Bristol



AREA DEAN'S LETTER

WHY HERE? WHY NOW?

North Wiltshire Deanery is a grouping of 6 largely rural benefices with only 2 town churches amongst our 31 parishes, coming into being in 2016 after a large scale pastoral reorganisation across the whole Deanery. Chapter comprises 6 incumbents and 10 self-supporting associate / active retired clergy, with good administrative support. It is also fertile ground for curates – we have 3 at the present time, one of whom is 'Curate-in-charge' in Gauzebrook during this period of vacancy.

Over the last few years as the North Wiltshire Mission Area, the working relationships between both clergy and senior laity have become ever closer, as we work across boundaries, doing many things 'better together' by pooling our resources whilst leaving parishes the freedom of doing best what they do locally. This is not without its challenges, and we are at a point of transition where the funding for the Mission Area is ending and we have to find ongoing funding for those things which we wish to continue, for example our very successful youth programme.

This vacancy has come about for the very best reasons. The Reverend Adam Beaumont, appointed to Gauzebrook in 2020, was installed without ceremony in the midst of lockdowns, faced the challenge of getting to know people without being able to meet them, and then towards the end of 2023 was appointed as Associate Archdeacon for the Diocese! Prior to Adam the

previous incumbent Christopher Bryan was in Gauzebrook for 9 years before becoming the Archdeacon of Malmesbury. Whilst this is a complete coincidence, and somewhat of an honour for the group, it has also come as quite a surprise; they were enjoying getting to know their incumbent and working through the visioning process to discern what God might be calling upon the benefice to do. We have been allowed to recruit as soon as possible because the reasons for departure were good, and so we are looking for someone who can help complete that visioning process and bring their particular skills to bear on the life of the churches.

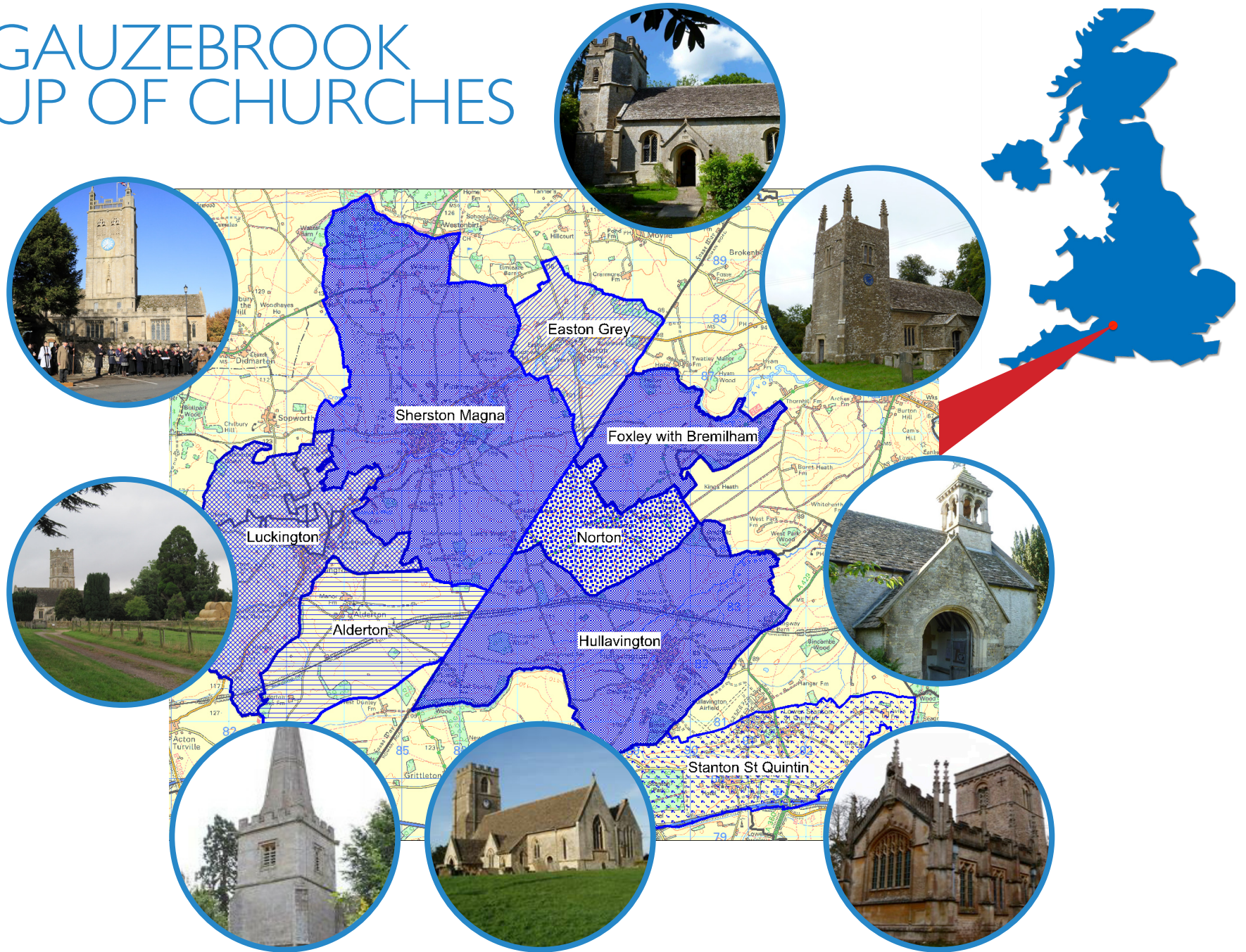
You will find a close-knit supportive team of colleagues here, and we pray for everybody who reads this pack and feels the need to test God's calling towards North Wiltshire!

If you would like to have an informal conversation with me, then please email me at rector@woodbridgegroup.co.uk. In the meantime, please be assured of my prayers as you consider this profile and discern God's call upon you.

The Reverend Steve Wilkinson,
Rector of the Woodbridge Group & Area Dean of North Wiltshire.



THE GAUZEBROOK GROUP OF CHURCHES



THE DEANERY

NORTH WILTSHIRE MISSION AREA (NWMA)

The Diocese of Bristol has a strategic initiative to support its vision and priorities to develop Mission Area and Resourcing Churches. In a Mission Area, parishes across a wider geographical area partner in a co-ordinated approach to mission.

www.bristol.anglican.org/mission_areas

Since 2017 the 31 parishes of North Wiltshire have been working closer together, underpinned by the Strategic Development Fund. The funding is now coming to an end, but the way we are working together has been permanently changed by deepened relationships between both clergy and laity. Where we can benefit from “Better Together” we do so (e.g. annual Marriage Preparation), but where something is best done locally it is left to the parishes.

There are some exciting projects in the Deanery which are not only bringing the churches together, but also giving a sense of mission to our outreach.

- Wild Church, established in 2021, now runs as part of NWMA, encountering God in creation – always meeting outdoors, currently four times per year somewhere in the Deanery. It has a small but loyal following.
- A more recent project, The Athelstan Pilgrim Way, is timed to coincide with the eleventh centenary celebrations for King Athelstan, first King of all England who is believed to be buried in Malmesbury. We are creating a Pilgrimage Route around the church buildings of our Deanery. The route has been broken up into six circular walks, and the Gauzebrook section is to open by Easter 2024 and the Malmesbury one in the summer 2024 to coincide with the celebrations of Athelstan. The routes will have guidebooks for adults and children, with a stuffed toy dog in each church for younger visitors to look out for. Fundraising for this project is underway to fund way markers, maps, guidebooks, cycle routes, advertising



boards, information leaflets, passports etc. to make this wonderful walking route, where nature can be enjoyed, spirits renewed and in some cases self-discovery, can take place. The walking route will appeal to anyone who enjoys looking at historic buildings, enjoying nature and putting some miles onto their exercise routine.

WELCOME

THIS IS US

The Gauzebrook Benefice is a group of eight parishes, each with its own history and unique characteristics but all seeking to work together, sharing a common vision of Loving God, Loving Neighbour.

We have:

- A spirit of co-operation across our Group;
- A committed and proactive Ministry team;
- An active and positive presence in the schools in our Benefice;
- Reordered buildings providing opportunities for growth;
- A Deanery Mission Area with Strategic Development Funding;
- Congregations eager to embrace new ideas and ready to develop mission;
- A broad range of worship styles;
- Supportive PCCs, a committed community of volunteers and the support of a central Administrator.

IS THIS YOU?

Are you called to the beauty, joys and challenges of a multi-parish rural community, with a rich sense of tradition and heritage?

Do you feel called to lead and encourage us as we grow together in Christ?

Are you ready to help us to grow our communities in number and faith?

We hope our new Rector will:

- encourage and enable us in our mission and witness to our communities;
- have an invitational approach to all, inspiring trust and encouraging connection with God's love;
- lead us on the continued journey of our group vision, enabling us to grow more in our discipleship;
- encourage our gifts and skills to flourish in the service of Christ.

We are eager to appoint a new Rector who will:

- lead us to grow our pastoral care and ministry to families, children and schools;
- develop opportunities for ongoing shared acts of worship;
- help us to continue growing the connections between our parishes;
- bring a fresh perspective to our work.

We hope that our new Rector will enjoy:

- being part of the wider social life of our villages and engaging with the community events that bring people together;
- the richness of traditional liturgies and a broad range of styles of worship.

“Church is a place in which I can feel removed from the ‘noise’ of the world.”¹

¹ Quotations are taken from a survey of congregations and visitors in December 2023

COME AND FIND US

The Gauzebrook benefice covers eight rural parishes in the Deanery of North Wiltshire in the Diocese of Bristol. The county border between Wiltshire and Gloucestershire crosses the north of the benefice, and the M4 motorway is at the south. The benefice sits between the towns of Malmesbury, Tetbury and Chippenham. Bristol, Bath, and Swindon are about half an hour's drive away and London is about 70 minutes by rail from Chippenham or Kemble.

The area is on the edge of the Cotswolds, a designated area of outstanding natural beauty and Westonbirt Arboretum is within the benefice's boundaries. Many of the villages are also in conservation areas. Although it is a rural benefice with working farms in the area, employment opportunities are very varied, with many local enterprises of all types with some people working from home offices as well as short and long-distance commuting. 9 Regiment, Royal Logistic Corps, is based at Buckley Barracks in Stanton St Quintin, with married quarters accommodation in both parishes of Hullavington and Stanton St Quintin. Dyson Technologies has its

UK Headquarters in Malmesbury and its university and research centre is adjacent to Buckley Barracks.

There are local shops in Sherston, and a village shop in Luckington and Hullavington. The fuel filling station in Lower Stanton St Quintin has an associated food store, as well as a multi bay EV charging point, giving the village strong sustainability ratings. There are four primary schools in the Group, two of which are Church of England voluntary controlled, and we have strong links with them all. Secondary aged pupils from the area have options for state schools in Malmesbury, Tetbury, Chippenham, Cirencester and Stroud, as well as many private schools.

We are thrilled that our historic parish churches include some real gems. St Mary with St Ethelbert, Luckington, has been used for several films and television programmes. It is well known as the subject of the hymn "Let all the world, in every corner sing!" sung to the tune "Luckington." Bremilham Church, in the parish of Foxley, is the smallest active church in England, with an annual Rogation Day Service which is well

attended by people across the benefice. Foxley Church is also used as a film location. St Giles, Alderton is a potential film star, as internally it remains as it was restored in 1845.

Our church buildings are described on our website, www.gauzebrook.org with links to individual parishes via A Church Near You. Some of our churches have their own websites, or social media pages, all of which are also listed on A Church Near You. We have written more about each of the parishes and the character of the churches on the following pages. The parishes are proud of their churches and their history. All our church buildings are open daily during daylight hours, providing a valuable physical link for the community and visitors.

The annual rogation day service at Bremilham Church, Cowage Farm, Foxley



THE STORY OF OUR BENEFICE

The Gauzebrook Group was formed in 2006 by the amalgamation of the team of Hullavington, Norton and Stanton St Quintin, with the team which comprised Sherston, Luckington, Alderton, Easton Grey, and Foxley. It was formally constituted as a benefice in 2016. More recent initiatives, particularly with respect to our mission to younger people, have built on links with the deanery and the North Wiltshire Mission Area and encouraged more joint working between our churches.

GROUP SERVICES

When there is a fifth Sunday in the month, a group service of Holy Communion is scheduled to take place on a rotational basis in the churches across the benefice. Group services are popular, and well attended, and the smaller churches are particularly pleased to host and welcome a larger congregation. Because of this, we would like to explore how we might adapt our cycle of services so that these are held more frequently.

All evening services are listed as Group Services. There is a monthly celebration of Holy Communion using the Book of Common Prayer, which has a loyal following. The Advent Sunday Service of Light, Ash Wednesday and Maundy Thursday services are group services. On Good Friday there is a Final Hour service in Hullavington, and a family service in Sherston, after which there is a walk of witness to Luckington, where we hold a combined open-air service followed by tea and hot cross buns. We hold an annual group service for All Souls' Day, to which we invite relatives of those who have died in the previous year.

REMEMBRANCE DAY

Remembrance Day services are held in Hullavington, Luckington, Sherston and Stanton St Quintin. The latter three services are held in the open air, with good attendance and community involvement. The service at Sherston, with Easton Grey, includes a marching contingent

from 9 Regiment RLC, supported by the local uniformed organisations. The service at Stanton St Quintin concludes inside, after wreath laying at the war memorial. The schools also hold their own remembrance services in our churches during the week before Armistice.

“Attending church enables us to strengthen bonds of our Christian community.”



PARISH LIFE

Our villages have their own characteristics and local flavour, with a strong community in each of them. Many church members have prominent roles in the villages, serving on parish councils, developing neighbourhood plans, serving as school governors, and enjoying active participation in community groups. Our churches are focal points in their communities, with Hullavington, Sherston, and Stanton St Quintin running regular weekly drop-in cafés and other regular opportunities for community engagement and fellowship. In many of our parishes, annual village fundraising and social events are organised by the community for the church.

A recent survey of our congregations throughout the benefice endorsed the view that fostering a sense of hospitality is something we do well; it is an element of group mission to which we are all very committed. In addition to the welcome people receive in our churches, a great deal of energy and warmth goes into caring and providing a broad range of

opportunities to bring people together across the community.

Whilst we are aware of our good fortune in being able to live and work in a beautiful rural setting, we recognise the importance of pastoral care for those facing a range of challenges in and beyond our parish boundaries. Outreach is both practical and financial. In the case of the former, we work hard to keep abreast of the needs of our local residents, regardless of whether they are church attenders, and provide appropriately sensitive support on an individual basis. Charitable giving is determined on an individual parish basis. PCCs identify priorities for donations and giving to external charities, at local, national and international level. Christian Aid week, on the other hand, continues to be organised centrally.

Providing encouragement in our faith to one another is a priority in our rural location. As well as the opportunity to attend group services in our different churches, we organise Lent groups and

study groups across the benefice. Active home groups, run by lay people, meet regularly in Hullavington and Stanton St Quintin, welcoming members from across the group for Bible study, prayer and friendship. A group also meets weekly at lunchtimes in the Old Ship Pub in Luckington for study and fellowship. The Gauzebrook Family choir rehearses weekly, and sings at special services; festival choirs are a very popular element of our Group Advent Services.

“We are a community of all ages and backgrounds.”

Holy Cross, Sherston, visit Wiltshire Air Ambulance, one of their charities.



WORSHIPPING TOGETHER

The churches in our benefice were filled during Advent and Christmas 2023. The Group Advent service of light, hosted by Hullavington, was a joyous example of worship, led by a choir drawn from across the group, with good attendance and refreshments afterwards. We have a few organists across the group, many musicians and conductors for our Festival and Family Choirs. The village carol services held in each parish were all well attended, with strong attendance even in the small church of Alderton. The Christmas Day service at Easton Grey (a festival church) brought the village together. We want to work on growing our mission by building on these contacts on special occasions.

All our churches have an important role in their communities through funeral services, weddings and baptisms. There are fewer weddings and baptisms than we would like, nevertheless, Stanton St Quintin's location next to a hotel encourages use of the church for wedding services, and brings wedding couples into church. At least two

people have been baptised in the church because of this ministry. Many couples remain in contact with the church after their ceremony.

"We wanted to come back because it was our first wedding anniversary and we knew we would get a good welcome"

(Wedding couple from Cornwall, revisiting Stanton St Quintin)

Several couples regularly travel long distances to return to the church where they were married.

Alderton and Sherston both have working bell towers and teams of ringers, and host visiting bell ringers to their towers. Both sets of bells are rung before morning services and on special occasions.

There is a range of worship and service styles and traditions across the Group. The Eucharist is usually celebrated using the Common Worship rite, but a monthly evening service using the Book of Common Prayer is held in Sherston, appealing to many, from across the



benefice

and beyond.

In Hullavington, as well as the regular liturgical services,

we run a monthly informal lay-led service

using contemporary music

and visual projection. Additional activities and worship are held in the church: Messy Church for all families in the Gauzebrook benefice and youth worship, Adventure Church led by one of our LLMs and Wild Church for young people across the North Wiltshire Mission Area, coordinated by our Youth Mission Enabler.

We serve refreshments after morning services in most of our churches, where there are facilities. Somehow our volunteers manage to provide coffee and cakes at the Group Services - even at the smaller churches with no facilities!



SERVING OUR SCHOOLS



We work with our two church schools in Hullavington and Sherston and with the community schools in Luckington and Stanton St Quintin. All the local primary schools hold services in the local churches during the year, including Christingle, Easter and Harvest, and members of our ministry team visit the schools to lead Collective Worship. Other volunteers lead 'Open the Book' worship, after school clubs and we offer 'Experience' events in our churches to enhance the RE curriculum and to show our children that they are always welcome in church.

In addition, our Church of England schools benefit from active Foundation Governors who offer advice and support particularly during SIAMS and Ofsted inspections.

SERVING OUR YOUNG PEOPLE

Together with our work in schools, we realise how important it is to establish a pattern of worship which suits younger families. This begins with careful preparation at the time of baptism and is followed through with our weekly toddler service,

'Little Lights'. Opportunities for all age worship occur regularly in our churches and are augmented by a monthly Messy Church in Hullavington, and Adventure Church. This uses the wonderful countryside we have locally to teach our families through interaction with the outdoors. The Parable of the Sower took place on a farm walk, we visited local donkeys and a stable for Christmas and enjoyed searching for the Lost Sheep by following a trail of wool.

Two of the primary schools within the Group benefit from substantial funding each year from a small charity, the Anne Brayne Foundation, the aim of which is to support religious education and activities for those below the age of twenty-five in five of the Group's parishes.

Together with the churches which make up the North Wiltshire Mission Area, we have been jointly funding the NWMA: Youth programme which employs a Youth Mission Enabler and a Youth Work Intern via SWYM (South West Youth Ministries). We would like more than one intern, but the availability of youth workers is currently limited.

We are delighted that the mission has grown over the last three years to provide regular Christian Union sessions at Malmesbury Secondary School. In November, the team also spent a week with pupils looking at the topic of "empathy" and how Jesus' humanity means that he has unique empathy with our daily lived experience. Other activities include a weekly peripatetic Sunday evening youth homegroup, a regular monthly social event and now a fledgling youth band with occasional worship events. There is also a limited crossover into primary schools, with some work with pupils in Year 6 as they approach the transition to secondary education.



WORKING TOGETHER



This is an exciting time for our benefice. Since the trials of the pandemic and its associated lockdowns, we have embraced the process of developing more effective and efficient ways of working together, listening to each other so that we can:

- grow our mission, collectively and within our parishes; and
- identify the things we should do together and those that work better as individual churches.

Each of the eight parishes has a PCC. We appreciate that time pressures do not allow the incumbent to attend all individual PCC meetings, and for this reason most PCCs have vice chairs. Our parish office, run by our group administrator, provides a very valuable service, simplifying and co-ordinating routine administration. We have established a unified corporate design theme to promote the Benefice as a cohesive group. We are sharing more of our administrative work, services, events and activities across the group. Our Group Council, chaired by the Incumbent and made up of the ministry team and the

churchwardens, meets, co-ordinates and provides oversight.

One of the initiatives by PCC members across the benefice in the last eighteen months has been holding joint strategy meetings. Led by our previous incumbent, we began by exploring elements of the 'Transforming Church. Together' strategy. Working alongside one another, we reviewed expectations in our communities of those working in rural ministry; we examined the concept of lightening the load and identifying what we do best in our individual parishes, and what can be done better together. Most recently, we have begun to revisit our vision within the context of the deanery and diocesan themes. We are aware of the importance of being able to articulate what we mean by 'Loving God, Loving Neighbour' as we worship, minister and care for our parishes and our neighbours. In the process of examining how we live out that mission, we have asked ourselves key questions to help us to understand what our churches are like now and what we think God might be calling us to become in the future.

Individually, our PCCs have developed their own sets of objectives for each parish, and these objectives relate to our overall Group Vision. These are not the same for each church – priorities for the smaller parishes are different to those for the larger ones – but there are common themes of working with our communities, engaging with the younger generations, building on our strengths as a group, and using the breadth of styles of worship in our services to grow our congregations in numbers and in faith.

As a group, we are jointly committed to the ethos of sustainability, and all the churches hold the the bronze Eco-Church award, with some churches close to achieving verification for the silver Eco-Church award. There are churchyard working groups in the parishes, often including non-regular church attendees as volunteers. The smaller churches of Easton Grey and Norton have strong support from the community, recognising the historical and social value of the church building. In two churches, the Community Payback Teams help with churchyard maintenance; a small, but perhaps important, part of outreach.

MOVING FORWARD

The work we have done together has helped us to take stock of our strengths and weaknesses and revisit areas for growth and development. We celebrate a shared commitment to providing hospitality and service across the Benefice. We have formed strong local links and those who live and work in our parishes recognise the church community as welcoming, caring, and supportive. Our beautiful rural churches are regarded as special places offering both spiritual and social nourishment. However, we know there is more to be done across the benefice, and we look forward to continuing our mission supported and guided by our new Rector.

Whilst we have established good connections with the North Wiltshire Mission Area and their work with young people, we see the need to increase our relevance for younger members of our communities. We cherish the talents and commitment of our more mature church members and volunteers, but we recognise the importance of encouraging new people to contribute to our work and

worship. Establishing the balance between the operation of individual PCCs, being sensitive to local needs, and joint working for the collective good of our overall group also remains a priority. To this end, we are looking forward to developing more interactions between our churches, gaining in strength from each other and seeing all our churches flourish. As part of a mission area, we know the importance of continuing to develop as a dynamic group of Christians working to grow God's Kingdom together. This will be at the heart of our work with our new incumbent.

"I attend church to receive spiritual refreshment as well as a chance to enjoy fellowship after the service with refreshments for the taste buds!"



OUR TEAM

MINISTRY TEAM

The Ministry Team consists of the Stipendiary Curate, Associate Minister (SSM) and five LLMs. We also have the services of a retired priest who holds PTO. One of our LLMs is our former Rural Schools & Churches Worker. The ministry team meets weekly for Pause and Pray, an opportunity for spiritual support and encouragement as well as for organising parish business and being an active communication link across the Group.

Members of the Ministry Team enjoy conducting services in a range of styles. While some members minister more frequently in particular churches, all churches benefit from their availability to lead services.



The Reverend Sharon Glead Curate in Charge

Full-time stipendiary curate appointed in July 2022.

“ I love rural ministry and am blessed in many ways, including supportive communities and a range of services and traditions across the Gauzebrook Group of churches. I have a heart for caring for people and creation. I love to participate in ecumenical and community events and fresh expressions ministry.”



The Reverend Susan Harvey

Sherston resident for many years and a full time Self Supporting Minister since 2012.

“I have much experience in pastoral ministry across the Group and enjoy building the relationships involved in taking Occasional Offices.”



The Reverend Alastair Davies PTO

Ordained in 1984 and served as an RAF Chaplain and the Senior Chaplain at the Royal United Hospital Bath, holds PTO in the Dioceses of Bristol and Europe and is also a volunteer Chaplain on cruise ships.

"I take services in the churches across the Group and neighbouring parishes. I am a trained Spiritual Director and Cruse Bereavement Volunteer."



Helen Davies Licensed Lay Minister

Licensed in 2021.

"I enjoy supporting the Gauzebrook group of churches by taking Morning Praise, informal services of the word, school assemblies, Evensong, and funerals. I am normally available for 2 services a month. I am sub-warden for Licensed Lay Ministers for the deanery and have completed a course in Spiritual Direction."



Marjorie Morgan Licensed Lay Minister

Lay Minister for 31 years and long-term resident of Stanton St Quintin.

"I lead Morning Praise and Family Services across the Group, as well as other non-Eucharistic services."



Becky Fisher Licensed Lay Minister

Appointed Rural Schools and Churches Worker in 2012, but although now retired, continues to serve our schools and families in a voluntary capacity

"I am a Godly Play Advocate and would like to have time to do more Godly Play across the group. As LLM I lead worship on two Sundays a month."



John and Henny Metters Licensed Lay Ministers

Licensed as Lay Ministers in 2005.

"John now takes occasional services and Henny takes services once or twice a month."

"We value the commitment and the hard work of the ministry team as well as all those who contribute time and effort supporting the church in diverse ways."

ADMINISTRATIVE SUPPORT AND COMMUNICATION

The Gauzebrook Group relies on numerous volunteers who all provide valuable support, often unseen or unnoticed by many. Collectively, our volunteers provide countless years of experience, as well as being an active link with the villages and communities of the Group.

We share a part-time (20 hours a week) Administrator with the nearby Braydon Brook Group. This arrangement works well, as both groups gain from the shared work experience and knowledge. Our administrator is the main public point of contact for the Group and supports the two incumbents and ministry teams. As well as being the point of contact for the group for weddings and funerals, our administrator's work includes co-ordinating Diocesan fees for the Group, the Group Diary, preparation and distribution of the weekly electronic newsletter (the Gauzebrook Gazette) and website postings.

The office is located adjacent to Malmesbury Abbey, with which the Group has close connections.

The Group uses a variety of internal and external communication methods including:

- A weekly email newsletter to 196 addresses on the Group distribution list, giving details of services for the coming weekend and the following week. Some parishes print a small number of these for physical distribution;
- Articles and publicity in village magazines such as the Cliffhanger (Sherston), Hullavington News (Hullavington); Community Matters (Luckington by email);
- Pew sheets and information for visitors, inside churches and on notice boards;
- Christmas cards detailing the seasonal activities and worship;
- Social media (Gauzebrook Facebook page), and shared postings onto village pages;
- Websites.

The printed Gauzebrook monthly magazine, (The Parish Life, circulation 450) was suspended in January 2024 as it had become uneconomic, and we are looking at alternatives for communication.



Alison Withers
Parish Administrator



THE RECTORY

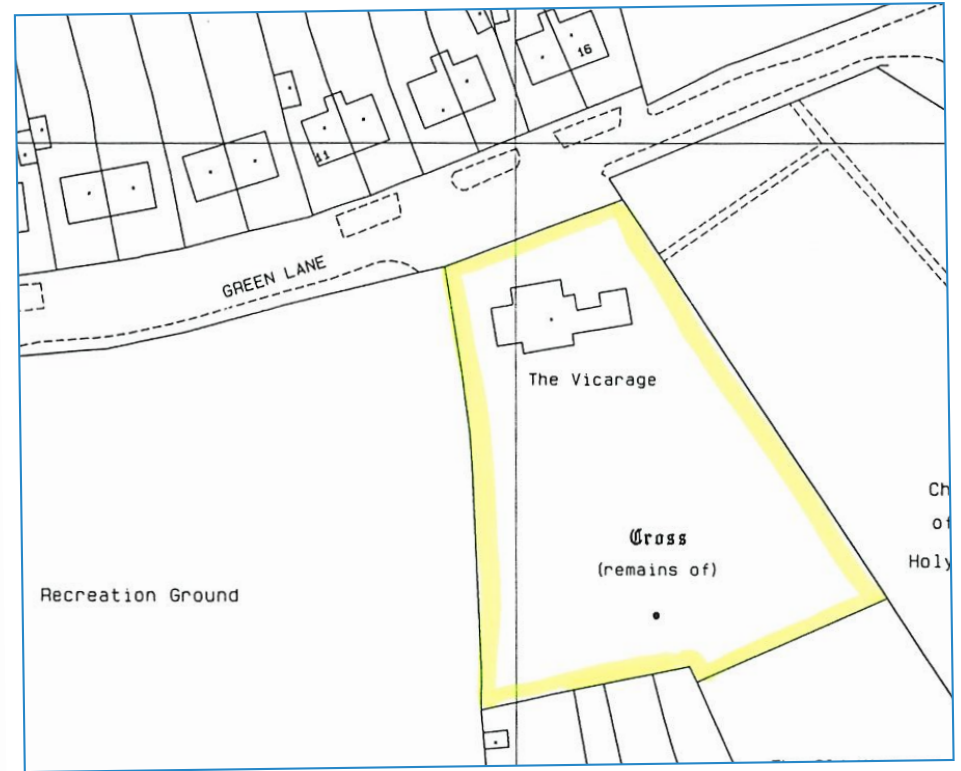
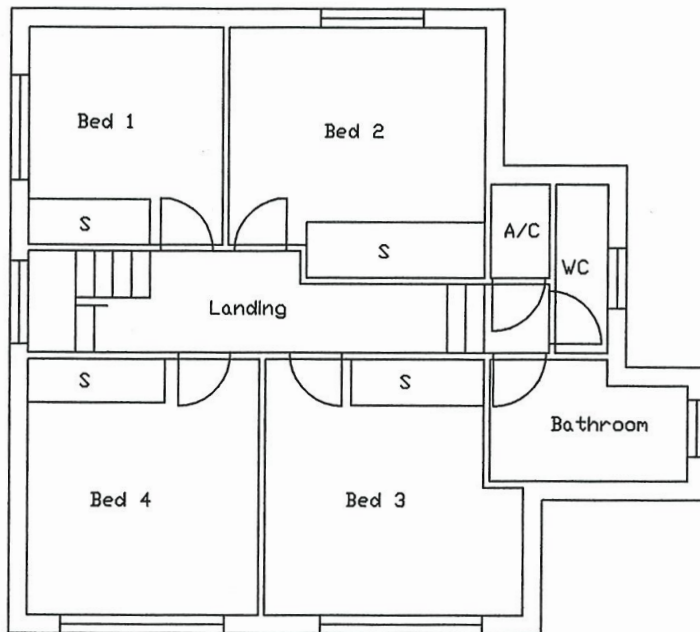
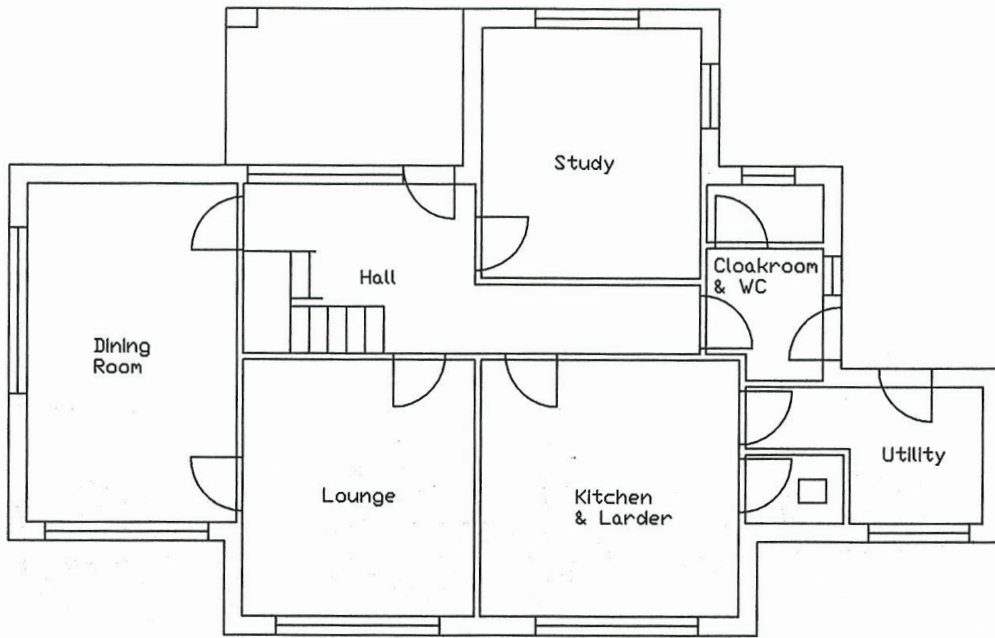
The Rector will occupy the Vicarage, Green Lane, Sherston SN16 0NP. It is in the village of Sherston (www.sherston.org.uk), the largest of the eight parishes, situated adjacent to the churchyard. It is 200 yards from the local primary school (www.sherstonprimary.co.uk) in one direction and 200 yards from the High Street in the other. Sherston is an attractive Cotswold village that is frequently included in lists of desirable, popular or top villages in the country by newspapers and journals. The village has a Post Office and Co-op store, two pubs, hairdressers, coffee shops, takeaway restaurant, motor repair garages and many other businesses. The village and its environs have numerous active clubs and societies for all ages. Many villagers and visitors take part in the annual Boules festival held on the High Street.

The vicarage is a four bedroomed 1970s building to the rear of the Church, and adjacent to the Pennymead Recreation Ground. The property was extensively refurbished in 2020 and a new roof,

kitchen, bathroom, internal and external doors and windows, boiler and radiators, and carpets were installed. There is a large garden, with lawn, flower and vegetable beds.

Sherston is 12 miles from Chippenham, 17 miles from Bath, 5 miles from Tetbury and Malmesbury. Nowhere in the benefice is more than 15 minutes' drive from the Vicarage (subject to floods, tractors and other rural delights.) Visiting all the churches requires a circumnavigation of about 20 miles.





View of the church from the vicarage

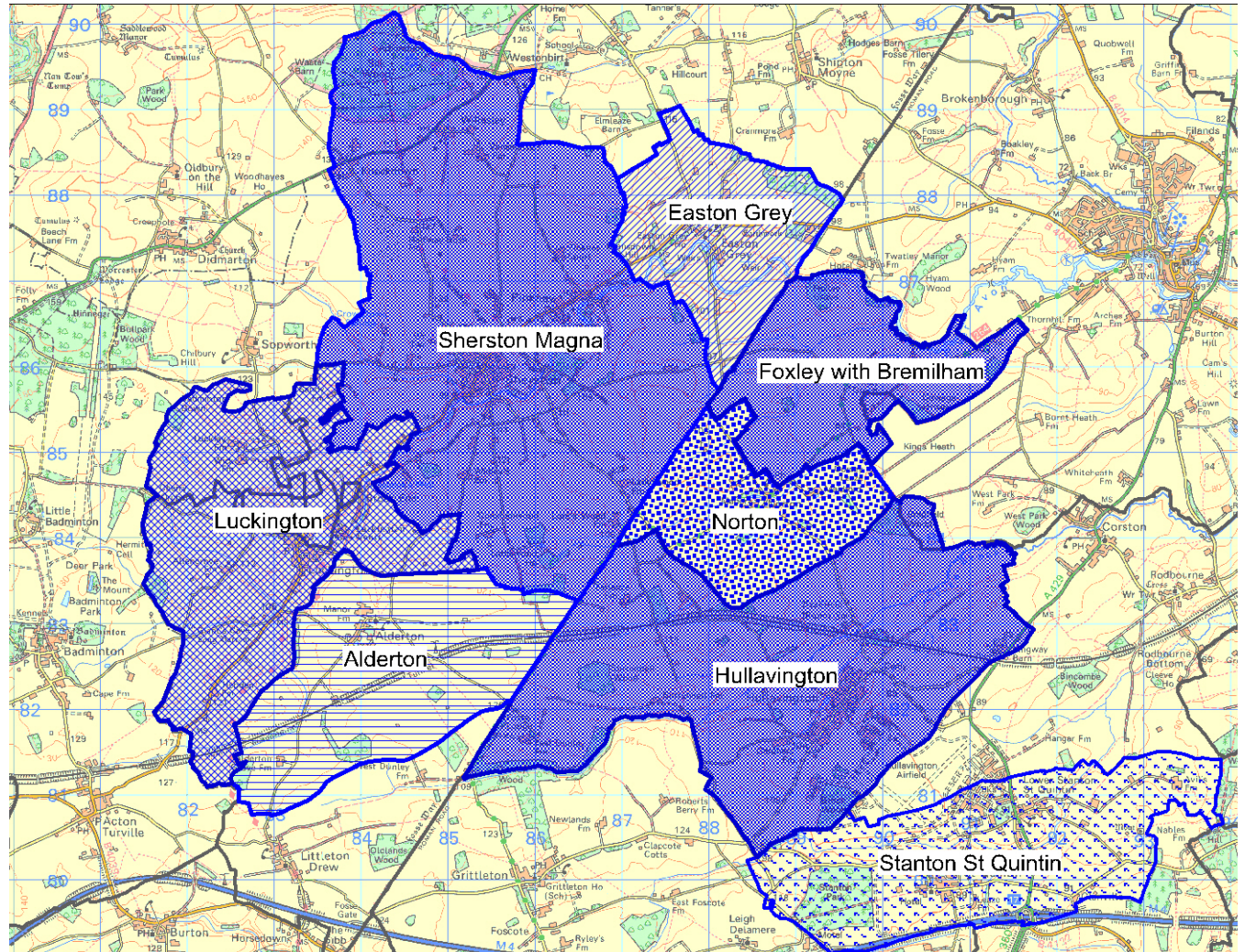


OUR PARISHES AND CHURCHES: THE CHURCHES OF THE GAUZE BROOK GROUP

The River Avon is at the north of the Benefice, and its tributaries, including the Gauze Brook, flow across the woods and farmlands of our parishes.

The churches are described in Pevsner's "Buildings of Wiltshire", and in the guide published by Wiltshire Historic Churches Trust, which has generously supported many projects in our buildings.

"They are a wonderful, welcoming, caring community."



ALDERTON - THE CHURCH OF ST GILES

Alderton, about two miles from both Sherston and Luckington, is a village of 35 homes and two working farms. As well as many listed houses it is known for its duck pond, home to a variety of specialist duck species.

St Giles, Alderton, is a twelfth century Grade II* listed building. Five of the chest tombs in the graveyard are also Grade II listed. The church was extensively rebuilt during the renovation and extension in 1845 to include the addition of its spire, which is visible from some distance. The original features that remained after this include pointed arches, the roof of the nave, the Saxon pillars of the north door and most of the tower. The bells were rehung as a millennium project and the roof, and tower were restored eight years ago, but there have been few social / fundraising events since the pandemic, partially because the PCC only has three members including the treasurer and secretary, and there is no church warden currently in post. The church is not in a strong financial position.

However, a recent (January 2024) meeting with the village community and the Deanery resulted in some positive support and the hope that over the coming months the financial situation can be improved.

We hold regular monthly services, publicised on the village WhatsApp group, Facebook page and our Church website. The Christmas service was well supported. Our priority now is to recover our connections with the local population and to continue to keep the church open as a place of worship.



“The church is extremely welcoming of my young family.”

“The Gauzebrook Group of churches is vital to our sense of community.”



EASTON GREY

Easton Grey is an unspoilt beautiful old village nestling in a deep green hollow. The river Avon meanders by a 5 stone arch bridge dating from the sixteenth century. There are approximately 30 historic houses with around 80 residents of all ages.

Our small Grade II listed church stands just above the village in the grounds of Easton Grey House. It has a fifteenth century west tower; the rest, including the box pews, was a rebuilding to designs approved in 1836. The vestry was recently re-roofed; there is still some work from the 2022 quinquennial inspection to be carried out, but all the urgent items have been completed.

We have some generous donors, so our requested Parish Share was paid in 2023 and pledged in full for 2024. The church, always open for people to enjoy, is well visited and appreciated, judging by the comments in the visitors' book.

In 2019 the church was designated as a festival church and since then the PCC has been without local members, and now consists of an Associate Minister and acting treasurer from elsewhere in the Group. However, the church is well loved in the

village, and tasks such as minor repairs, grass cutting, church cleaning, flower arranging, and Christmas decorations are carried out by valued volunteers working to their own rota.

The church is sustainable in its present structure, but we hope, in time, that a PCC can be formed from residents of the parish. The previous Rector had made progress by joining the village WhatsApp group and was subsequently personally invited to a garden party to celebrate the King's Coronation in the grounds of Easton Grey House and meet directly all the residents of Easton Grey.



“Group services...give us an important chance to come together for worship, and help to cement our identity as a wider group within the world-wide church: ‘Though we are many we are one body’”

FOXLEY WITH BREMILHAM

Foxley is the closest of the Gauzebrook parishes to Malmesbury and is united with the even smaller parish of Bremilham. Foxley is centred on a beautiful twelfth century church whilst, at twelve feet square, Bremilham boasts the smallest church in England in use, with its regular annual Rogation Day service for the Gauzebrook Group. The congregation is outside whatever the weather! The Bremilham church building is the property of one of the two farms in the village and is not the responsibility of the PCC.

Foxley is a close-knit community of about eighty including young families and those who have lived in the village almost all their adult lives. There is one service a month in the Parish Church, attended by a faithful congregation of eight to ten. These numbers swelled to sixty for Christmas and Easter and our special services such as celebrating Baptism or the Pets' service. We all celebrate when there is a baptism or wedding in the village.

Community is important here and the church is central to its cohesion. The village community assists with tidying the churchyard. Our harvest service concludes

with an auction of produce, and funds raised are donated to the Wiltshire Air Ambulance and other local charities. Although it is a struggle to maintain a parish church in such a small rural hamlet, our accounts break even each year because there are generous donors in our community and we are always able to meet our Parish Share. Our fund raising includes open gardens, clay pigeon shoots, barbecues etc.

We play an active part in the Gauzebrook Group, hosting group services, supporting the Gauzebrook Council and opening the church for group events and other activities including the annual Historic Churches Ride and Stride. At a recent vision evening we decided we would like to see Foxley Church as a village hall for the two communities of Foxley and Norton, a flexible space which could be used for social events and village gatherings, hosting harvest suppers, talks and cyclists' teas, but we would need to install the appropriate facilities.

We are determined that this sacred space remains open to all who cannot find peace and quiet or a place to pray in daily life. We will work to keep faith alive for the young people of today and tomorrow and will welcome all, whatever their denomination.

“The Gauzebrook Group of churches is vital to our sense of community.”

“The group service in Foxley was electric. Lovely to see the church so full and to join together in Worship.”



HULLAVINGTON - THE CHURCH OF ST MARY MAGDALENE

Hullavington is a vibrant, friendly, and increasingly diverse community. In addition to our active church, there is a village hall, shop, post office, garage and, on its outskirts, a popular café and brewery tap bar. It is the second largest village in the Gauzebrook Group with a population of about 1350. There are bus services to Malmesbury and Chippenham and junction 17 of the M4 is three miles away.

Educational facilities in the community are excellent with a Church of England Primary and Nursery School, both with a high proportion of pupils from service families. A weekly toddler group meets in the village hall. There are strong links between school and church; we hold special church services for the school and our 'Open the Book' team visits the school fortnightly. Hullavington is set to grow as planning permission has been granted for seventy houses adjacent to the school.

St Mary Magdalene Church, re-ordered in 2018, is in the centre of the village and provides a stunning venue for worship. The church offers a warm, inviting, and flexible space that is shared with the community

and used most days of the week. Whilst the Parish Council maintains the churchyard, a group of volunteers maintains the building and its environs. Residents from across the village come together to enjoy a sense of community and demonstrate their care for the grounds and the fabric of our lovely church.

The church offers valuable opportunities for private prayer and contemplation, as part of the 24-7 Prayer initiative. Our prayer stations offer encouragement and a point of focus to visitors. A WhatsApp prayer network was established in 2020, and this continues to play an important part in the community's prayer life. As well as the lay-led regular home groups, church members make informal house visits to individuals and families in the village who may need some support; this forms a valuable part of our shared commitment to pastoral care and fellowship.

The weekly Friday coffee and cake shop in church is supported by a broad range of people for chat and fellowship. 'Little Lights', the pre-nursery group, meets on Friday mornings joining the coffee shop at the end of their activities giving older residents a welcome opportunity to be with younger

families with children. The Hub, on the first Saturday morning and lunchtime each month, is an opportunity for those working during the week to enjoy our church's hospitality.

Working with the other churches in the Group we seek to deepen all aspects of worship and discipleship; extend our pastoral care across the community, extend our mission in support of life beyond our parish, our benefice and our diocese. Within the local community we will strengthen our links with village groups, new residents and school families; increase our care for the planet and the sustainability of our church; continue to explore new ways of using our building for outreach and mission; and improve our communications across the age range of our community.



LUCKINGTON – THE CHURCH OF ST MARY AND ST ETHELBERT

Luckington, two miles from the Rectory in Sherston, has a population of 600. The village has both a nursery and a primary school, a village hall run by its own committee, a playing field and a separate play area cared for by the local playground committee. The village pub houses the village shop.

St Mary and St Ethelbert Church is on the edge of the village, approached by a 120m long track from Church Road, passing across farmland belonging to Luckington Court. The track and path through the churchyard are part of the Macmillan Way and the Athelstan Pilgrim Route, attracting visitors to the Cotswold Area of Outstanding Natural Beauty.

The church is a beautiful Grade I listed building of historic interest with a thirteenth Century tower. Some years ago, it was used as the 'wedding' setting in the BBC's version of 'Pride & Prejudice', and it has recently been used again for filming another 'Jane Austen' wedding. It has a closed churchyard, with many 'Box' tombs. These had fallen into significant disrepair, but with a recent village

fundraising project, these have now been restored.

We have services twice a month. The congregation, although small, has now been swelled by members of the village's recently closed Methodist church. Our services now tend to have a more ecumenical feel, catering for our local friends. Numbers increase at festivals, and the annual Remembrance Day service is now held on the village playing fields, in the heart of the village.

We have close contact with Luckington School. They recently used the church for their Nativity Play and volunteers from the church present 'Open the Book' assemblies. Communication with villagers is via the village wide email circulation, 'Community Matters'; through this, residents are informed of church events along with other matters of local interest. In addition to the normal service collection, funds are raised via regular giving, and by profits from such events as Christmas parties, Open Gardens and concerts. The PCC, together with the Playground and Pre-School Committees, arrange the annual village fete and barbecue Party and sharing the proceeds.

We are keen for new life to be breathed into our church through the Holy Spirit. We would like to increase the number of enthusiastic people of all ages, especially the younger generation, attending Sunday services regularly engaging in more joint events with other village organisations and the other churches in the Gauzebrook Group; and making the church more welcoming by installing a kitchen and toilet on site.



NORTON – THE CHURCH OF ALL SAINTS

Norton is a small Wiltshire village with twenty-eight houses and a population of sixty. It has a beautiful Manor House, and two working farms. The church is in the centre of the village.

The congregation of Norton has recently increased and is holding steady at about twenty regular worshippers each month, as a result of newcomers moving to the village and continuing attendance from surrounding villages of the Gauzebrook Group. We continue to greatly benefit from the support of 'The Friends of Norton' at our monthly service. We use recorded music during services. Worship is along traditional lines with a relaxed, reverent and sincere approach. The Harvest and Christmas celebrations are well attended.

Our outreach is by personal invitation with reminders of service and events. We keep an email list and send monthly church news and updates. We have increased our involvement with the community, receiving support to maintain the churchyard. Our local volunteers form a regular rota for cleaning, flowers and refreshments after each service.

In 2021 and 2022, we raised £10,000 by holding a Christmas carol evening, inviting friends and parishioners to sing carols at the church followed by drinks and canapes at the Manor House. In 2022, we also received a generous legacy of £10,000. These funds have been allocated to building repair and maintenance, particularly the rainwater goods, roof, and interior redecoration (in progress). We have also received generous gifts to refresh the interior church textiles including a new set of silk altar covers for each liturgical season and new cushions and pillows for the chancel area. We want to be in a strong position to maintain and improve the church fabric to preserve it for future generations, as we see the church as a place of peace and an ecumenical house of prayer, worship and retreat where all are welcomed, whether from the local community, Gauzebrook or further afield.

Having established our strategy to keep the church going and grow with God's help, we are delighted to report that our prayers have been answered. Over the past two years, the engagement of newcomers and the wider community has strengthened the church's activity and finances. We pray for continuing engagement and participation from a growing congregation, particularly

younger generations. We want to be Spirit-led for God's purpose and for His will to be fulfilled. We will continue to work together with the other smaller churches within the Gauzebrook Group, sharing in fellowship, advice and mutual support.

"We feel we belong together; we are stronger together sharing fellowship and faith."



SHERSTON MAGNA - THE CHURCH OF THE HOLY CROSS

About 1800 people live in the parish of Sherston, which includes the hamlets of Willesley and Knockdown. We have a Church of England VC primary school, a doctors' surgery, two pubs, shops, post office, hairdressers, motor repair garages and various other local amenities. There is a strong sense of community and a wide range of local organisations and village events which are always well supported. There is currently a project in progress to repair part of the church ceiling and restore the pipe organ. Other repairs to the fabric will need to be considered when this project has been completed.

We take pride in the Church of England liturgy in its traditional form and this is reflected in our preference for regular Eucharist services. However, we are open to other types of service, and we enjoy the community spirit of the Group Services. Children are always welcome at our services, but we are finding it hard to attract and retain younger families; we also recognise the importance to our congregation of structured acts of worship. Festival and special services are very well-

attended, attracting the wider community. We have very good links with the local Congregational and Methodist Churches, sharing services and house groups and social events and our monthly warm space initiative.

We hold a weekly café in church, and we are able to host village events, such as the biennial Arts festival in our North Aisle, which makes the building an asset to the community. As well as members of the congregation, many other volunteers help us to care for our church fabric and we value this very highly. Our fund-raising events are as much about working within the local community as raising money. We try to use all appropriate means to contact village residents, including distributing the Group Christmas Cards and publicising our services and events in the Village magazine. We have recently formed a Living Churchyard Group, which is linked to our Eco-Church activities and the work of Sustainable Sherston. Many village residents donated generously to our recent maintenance projects, including roof repairs, which helps us to remember that our church is both geographically and socially in the centre of the village.

Our PCC meets regularly, and we have been following an agenda to develop our mission and outreach and explore closer links with the other churches in the Group. Creating change takes time and we have more work to do. We want to develop our children's and family ministry, including greater involvement with the school and diversify our pattern of services; and enhance the use of music, not only in Sherston, but across the Group.

The Vicarage is adjacent to the churchyard and church.



STANTON ST QUINTIN - THE CHURCH OF ST GILES

Stanton St Quintin's 250 houses are in Stanton St Quintin and Lower Stanton St Quintin, separated by the A429. The church's Parish Hall is midway between the two parts of the village. The Parish Hall is leased to an energetic committee and is used regularly by various community groups and by the church for social activities.

The church building is Grade II* listed and dates from the twelfth to the fifteenth century. The church was reordered in 2020 and includes an audio visual system, heating, a toilet, and kitchen. The churchyard is maintained as a wildlife haven and has won an award as a Living Churchyard. One of our coordinators has encouraged and supported other churches in Wiltshire to set up their own Living Churchyard projects. We plan to use funds from a legacy to install solar panels to offset future electricity costs.

Our services follow a traditional format but are relaxed and welcoming. We hold a service each Sunday, with two Eucharists, a Morning Praise and one family service each month. We serve refreshments after services to encourage fellowship and build

relationships. We want to support regular worshippers, visitors and newcomers to the area, including wedding couples at the hotel next door.

The church enjoys good links with the school which holds services in St Giles at all the main festivals and at the end of the school year. Classes also visit the church at various times during the year when it aids the curriculum. This relationship is important to the school pupils as well as the Sunday congregation; a pupil was recently heard to describe St Giles as "My school church". Those who are not regular worshippers support the church by being on the cleaning, flower arranging and coffee shop rotas and singing in the festival choir.

The church is appreciated and valued by the community with the church and community joining together, not only to raise money for the hall, the church, the school, the war memorial and outside charities, but to promote and maintain fellowship. church members support the village social activities. Our Thursday afternoon coffee shop offers a warm welcome to residents and visitors and occasional Saturday morning sessions include those unable to attend on Thursdays. We give an annual tea party to

recognise and thank all our volunteers for their support.

Our PCC meets regularly and we seek to be a strong vibrant witness to God's presence in the village and bring more people to faith. To do this we will work with the North Wiltshire Mission Area to attract more young people through organised activities; increase the use of our reordered church to serve the wider community in fellowship; deepen faith and encourage spiritual growth in our congregation through the weekly house groups and Gauzebrook Lent courses and develop our mission by increasing support to vulnerable parishioners.



CURRENT PATTERN OF WORSHIP

Our services are led by individual members of the Ministry Team, with the Rector usually leading two on any given Sunday.

We aim that there shall always be a Eucharist service within the Group on a Sunday and Ash Wednesday, and usually a Sunday morning Eucharist in both the northern and southern areas of the Group whenever possible. We would like to hold a Group Service each month, perhaps on the last Sunday, moving round the parishes. When there is not a communion service, there is Morning Praise or a family service. The service rota reflects the fact that it is not always possible for the smaller churches to have services each Sunday.

Last Sunday of the month - Group Holy Communion held in rotation between the churches.

Annual Rogation service held at Bremilham Church (Smallest Church in England) and part of Foxley parish.

Our new Adventure Church, led by one of our LLMs, is on every 5th Sunday, and run mainly outdoors, with some teaching and refreshments inside. The venue rotates across the benefice.

CHURCH	1ST SUNDAY	2ND SUNDAY	3RD SUNDAY	4TH SUNDAY
Alderton	Family Communion 9.30 am			
Easton Grey	Easton Grey is a festival church			
Foxley			Holy Communion 9.30 am	
Hullavington	Holy Communion 11.00 am Messy Church 3.00 pm	Morning Praise / Informal Service 11.00 am	Holy Communion 11.00 am	Family Service 11.00 am
Luckington		Holy Communion 11.00 am		Morning Praise 11.00 am
Norton				Holy Communion 11.00 am
Sherston	Holy Communion 9.30 am	Family Service 9.30 am	Holy Communion 9.30 am	Holy Communion 9.30 am
Stanton St Quintin	Morning Praise 9.30 am	Holy Communion 9.30 am	Family Service 9.30 am	Holy Communion 9.30 am
Evening services (Group Services in Sherston)	Evensong 6.00 pm	BCP Holy Communion 6.00 pm	Evensong 6.00 pm	Evensong 6.00 pm

ROLE PROFILE

Role Title	Rector of Gauzebrook Group of Churches
Name of Benefice	Gauzebrook
Archdeaconry	Malmesbury
Deanery	North Wiltshire

ROLE PURPOSE

GENERAL

To nurture the faith and discipleship of our existing church members and to teach, guide and further develop our approach to evangelism by leading and working with the churches and their communities.

RESPONSIBILITIES

LEADERSHIP

- Develop through consultation the vision for the Group that will enable it to look to the future with optimism
- Model good teaching, prayer and discipleship
- Lead the Gauzebrook Group in its continuing development of mission
- Provide ongoing structure and guidance to the Ministry Team
- Oversee the management of the Group Administrator
- Train, supervise and encourage curates, those on training courses and those exploring their vocation in the church and other areas of lay leadership
- Encourage and continue partnerships with our church schools

WORSHIP

- With the support of the Ministry Team lead services and occasional offices throughout the parishes of the Group
- Develop both traditional and modern styles of worship
- Provide a focus and direction for the Group services

DISCIPLESHIP

- Lead, encourage and assist people in their spiritual development through a commitment to prayer and Bible study
- Mentor with understanding and sensitivity- being prepared to challenge where necessary
- Proactively use the talents and goodwill of the village communities in order to grow the Kingdom of God
- Encourage, facilitate and develop our small groups programme
- Provide opportunities for individuals to explore their personal beliefs and development
- Encourage communities to give generously in response to God's generosity

PASTORAL CARE

- Take an active role in pastoral care and visiting
- Develop the pastoral care structure within the Group

ADMINISTRATION AND PARISH ORGANISATION

- Work in collaboration with the PCCs, Churchwardens, Group Council and the Administrator to ensure effective organisation of the benefice
- Attend PCC meetings as appropriate, use personal judgement to assess when attendance is necessary and at other times trusting in the qualities of PCCs members to ensure the effective function of individual councils
- Advise on and direct building initiatives and financial management systems when required
- Affirm and abide by national, diocesan and Group policies and legal requirements

SCHOOLS

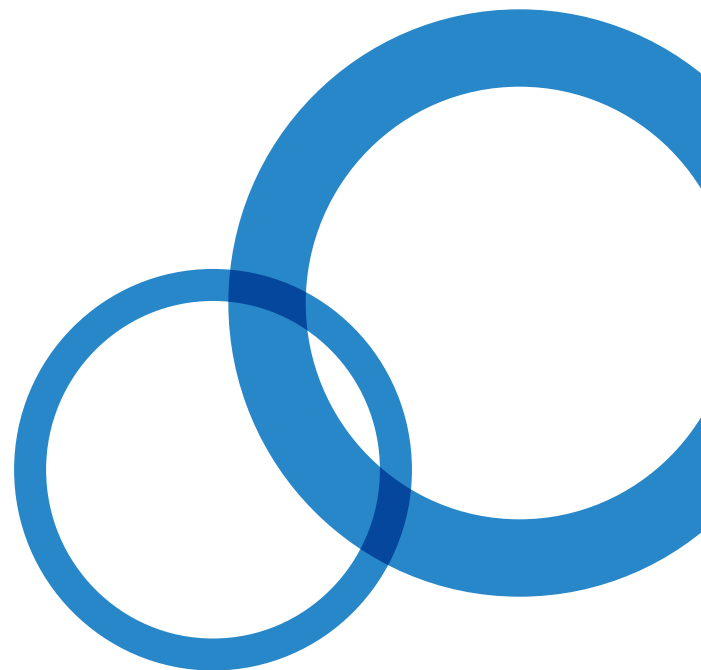
- Visit schools, lead worship, encourage and co-ordinate the work of the full time RSCW and volunteers in schools
- Encourage religious education and, through contact with schools, develop a greater understanding of the role of the church within the local communities

OUTREACH

- Maintain and develop strong links with churches, schools, local councils, community representatives and organisations that function to support each parish
 - Encourage connection between the church and the community in varied and exciting ways
 - Develop fresh mission ideas in partnership within The Mission Area initiative
 - To guide and further develop our approach to evangelism
 - Build upon the already established initiatives around our work with children and young people
-

SELF-DISCIPLINE, SPIRITUAL DISCIPLINE AND OWN DEVELOPMENT

- Give attention to time for personal study and renewal in all aspects of ministry and life
- Participate in the Ministerial Development Review and engage in appropriate Continuing Professional Development
- Follow an appropriate pattern of work that enables a full spiritual and personal life, as well as meeting the demands of the ministry
- Take care of your personal well-being, including physical, emotional, mental, and spiritual health, as well as building a good repertoire of spiritual and psychological strategies for resilience.



PERSON SPECIFICATION

QUALIFICATIONS / TRAINING

Essential

- Ordained priest within the Church of England, or a Church in communion with it, or a Church whose orders it recognises
- Have satisfactorily completed Initial Ministerial Education
- Fully trained in and committed to safeguarding of all in the community and able to work in line with safeguarding policies

EXPERIENCE

Essential

- Leading a team and the church in setting and holding vision
- Effective work in a rural setting, engaging with communities and organisations outside the church
- Evidence of collaborating effectively with other leaders in a Deanery and being someone who engages positively with the Diocese and its mission

Desirable

- Working with multiple churches to develop vision
- Encouraging and nurturing families with young children
- Enabling lay involvement in leadership and ministry
- Working in a multi parish or Benefice context

KNOWLEDGE/ SKILLS AND COMPETENCIES

Essential

- The ability to identify and respond to opportunities for mission in rural environments
- A person who can excite, envision and enthuse
- Leading with integrity and creativity a wide range of styles and approaches to worship
- The ability to motivate and inspire, developing new ideas and initiatives to encourage worship and growth within rural communities
- The ability to support existing Christians in evangelism and discipleship so that members of the parishes are encouraged to show God's love in action
- A good teacher, preacher and presenter of the gospel in accessible ways

GENERAL ATTRIBUTES

Essential

- A collaborative leader who is adaptable, resilient and positive
- Outward-facing, who naturally builds trust with others and connections with the wider community
- Faithful in prayer and grounded in Scripture and tradition
- Someone who knows where their strengths lie and humble enough to know when to seek help

Desirable

- Enthusiasm for exploring opportunities for groups and individuals to develop their faith outside of gathered worship
- An approachable listener, with a good sense of humour

OTHER

Essential

- Care and development of themselves and their personal relationships, including adequate time for family life, friendship, recreation, renewal and personal health, through taking a weekly day off and their full holiday entitlement
- Full participation in the emerging Transforming Church Together coaching and wellbeing programme



PARISH INFORMATION

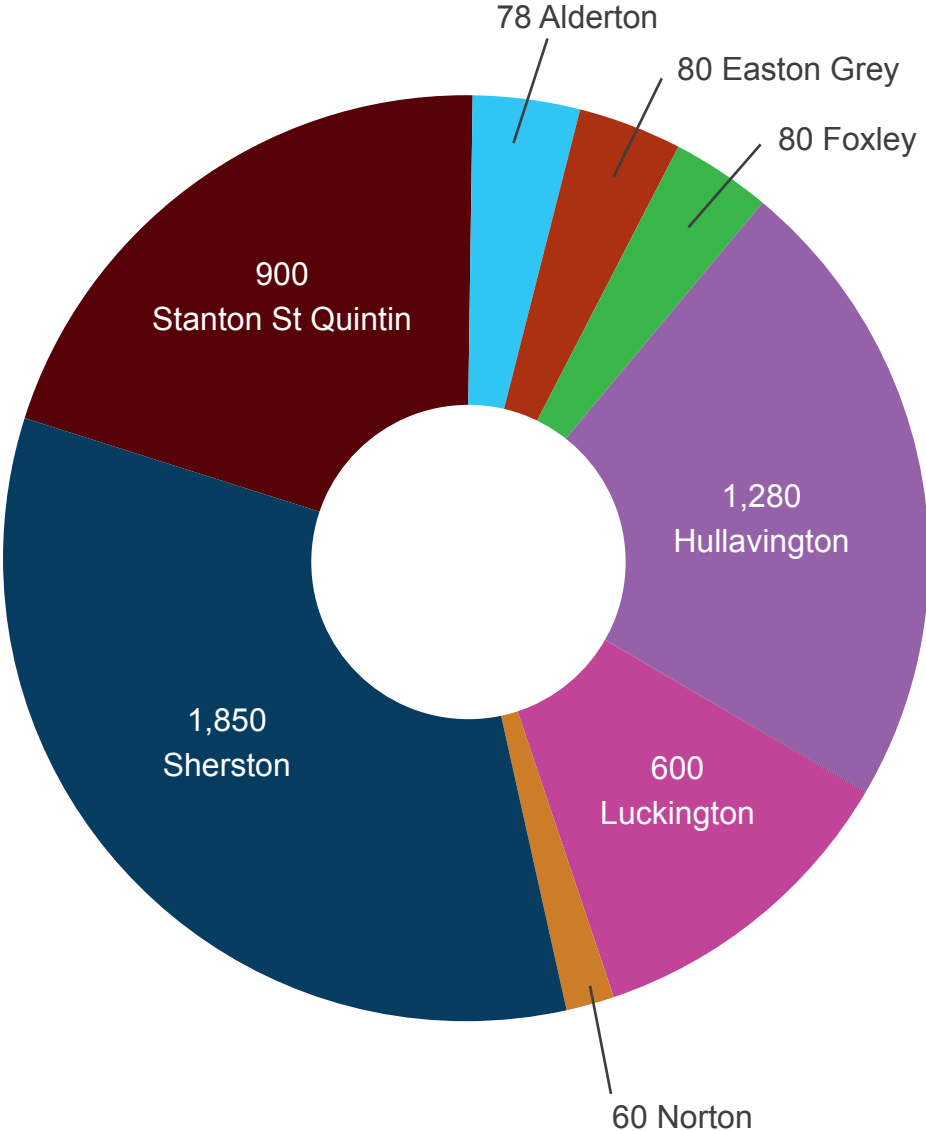
	Church Building	Open layout	Toilets	Kitchen	Church Wardens	School	Village Hall	Pub/Hotel	Village Shop/s	Civil Parish Magazine
Alderton	12 th C Grade II*						✓			
Easton Grey	15 th C Grade II							✓		
Foxley	12 th C Grade I									
Hullavington	12 th C Grade I	✓	✓	✓	2	CE	✓	✓ (Brewery)	✓	✓
Luckington	13 th C Grade I				2	✓	✓	✓	✓	✓ Email
Norton	13 th C Grade II				1			✓		
Sherston	12 th C Grade I	part	✓	✓	1	CE	✓	✓	✓	✓
Stanton St Quintin	12 th C Grade II*	✓	✓	✓	2	✓	✓	✓	✓	

PARISH POPULATION, ELECTORAL ROLL AND USUAL SUNDAY ATTENDANCE

	Est. Population 2022	Church Electoral Roll 2022	Usual Sunday attendance 2022
Alderton	78	17	9
Easton Grey	80	0	Festival Church
Foxley	80	21	17
Hullavington	1350	67	32
Luckington	600	57	8
Norton	60	12	20
Sherston	1800	80	33
Stanton St Quintin	900	44	17



POPULATION 2022



OCCASIONAL OFFICE FIGURES

This is the average number of occasional office services conducted each year across the Benefice from 2018 to 2022.

Baptisms	10
Weddings	10
Funerals	22

ATTENDANCE AT FESTIVAL SERVICES IN 2023

	Christmas Eve + Day	Carol Service	Easter Day	Harvest	Remembrance
Alderton	-	61	-	4	-
Easton Grey	69	-	23	-	Jointly at Sherston
Foxley	60	-	60	-	-
Hullavington	45 + 49	63	63	35	78
Luckington	75	47	48	45	82
Norton	36	-	-	24	-
Sherston	62 + 75	114	56	42	360
Stanton St Quintin	17 + 32	64	47	35	66

hyphen = no service held

“Our carol service allows us to escape the stress and glitz of the material Christmas.”



FINANCIAL INFORMATION

PARISH SHARE PAYMENTS 2018 TO 2022

	Alderton	Easton Grey	Foxley	Hullavington	Luckington	Norton	Sherston	Stanton St Quintin	Benefice total
2018	£880	£2,625	£2,700	£20,500	£7,150	£2,000	£36,000	£13,900	£85,755
2019	£1,000	£0	£2,770	£21,020	£7,630	£2,230	£36,900	£13,900	£85,450
2020	£1,050	£1,300	£1,500	£18,020	£7,920	£1,688	£37,644	£14,310	£83,432
2021	£1,000	£1,000	£1,500	£21,450	£7,920	£3,074	£38,694	£14,310	£88,948
2022	£1,100	£1,008	£1,500	£21,990	£8,120	£2,652	£28,580	£14,670	£79,620

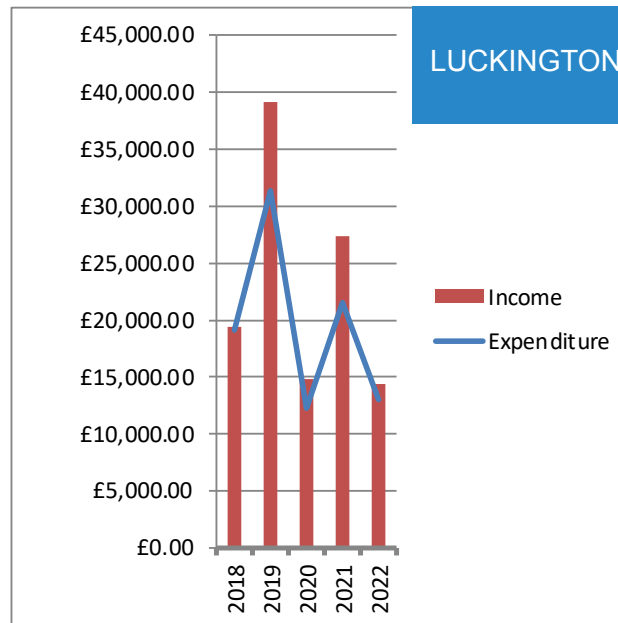
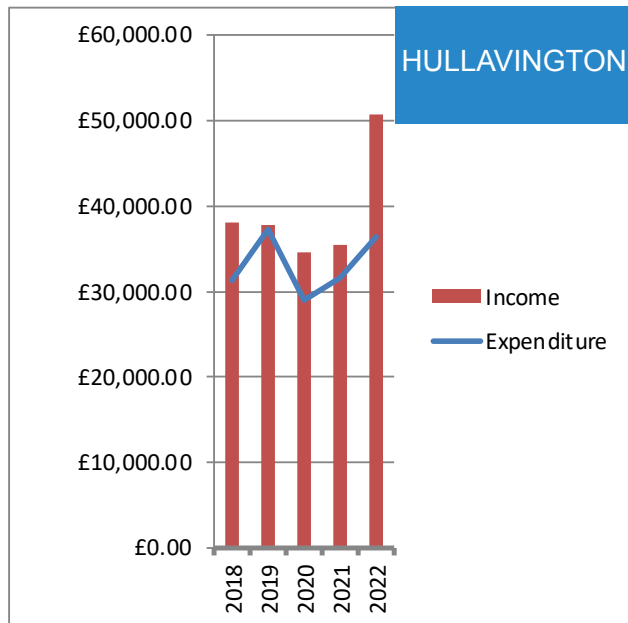
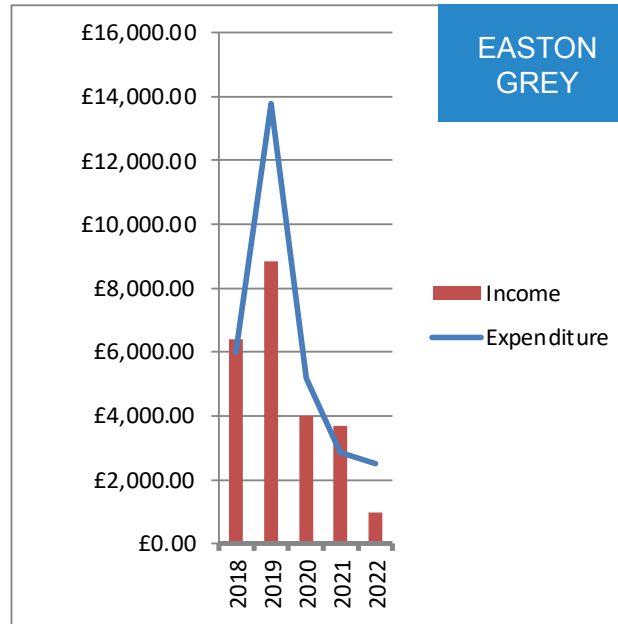
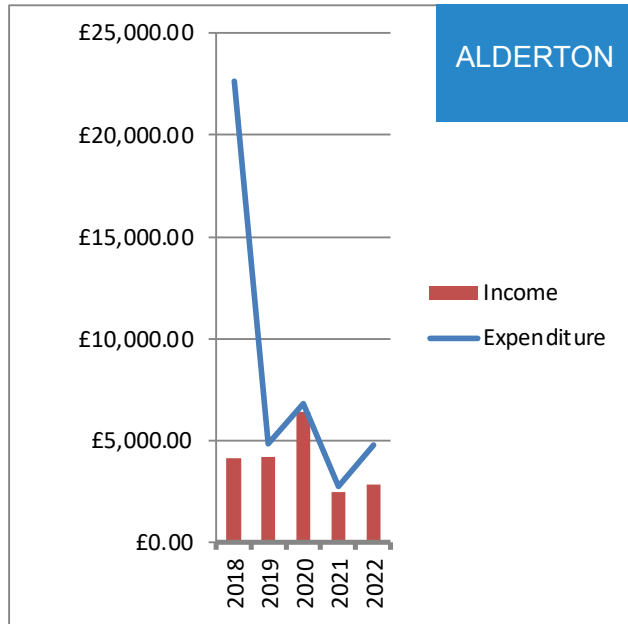
DECEMBER 2022 RESTRICTED AND UNRESTRICTED FUNDS

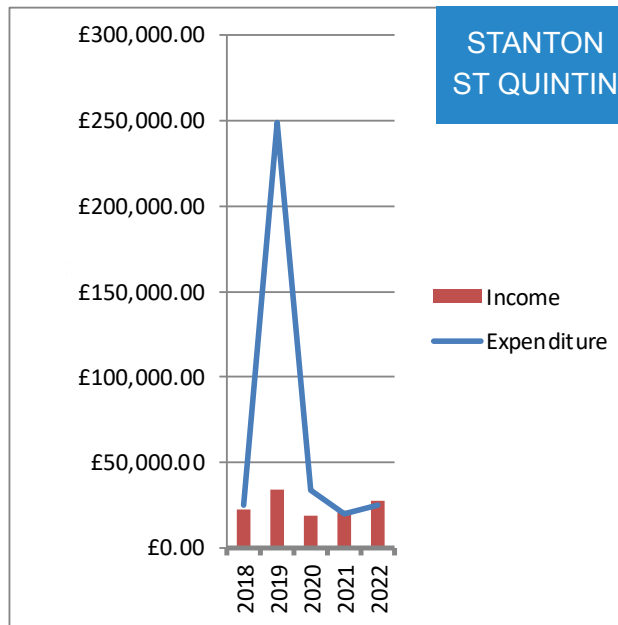
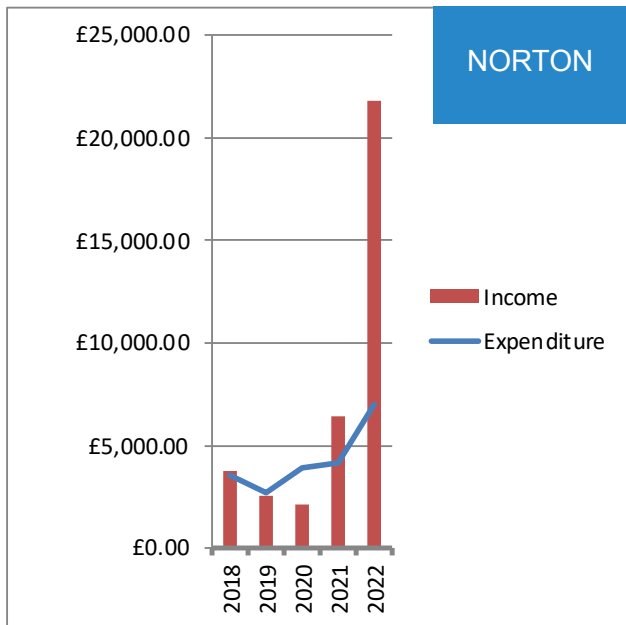
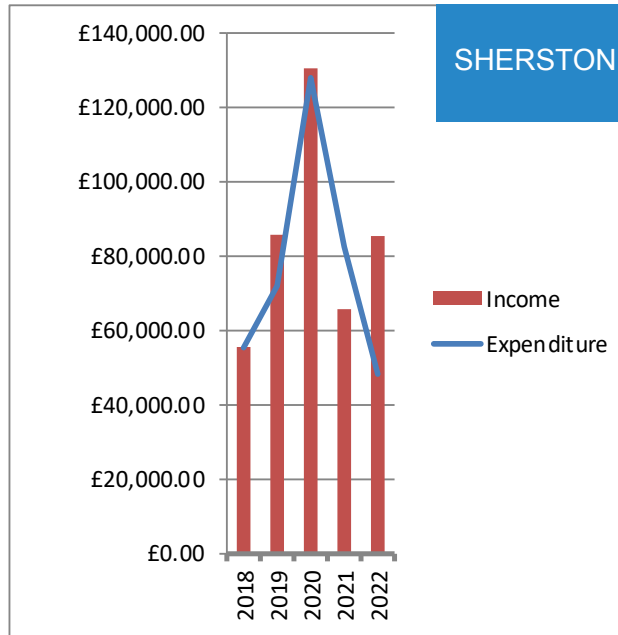
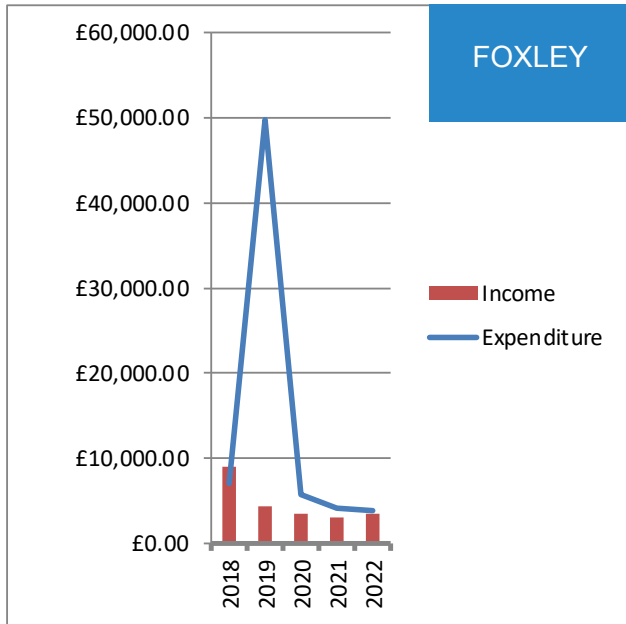
	Alderton	Easton Grey	Foxley	Hullavington	Luckington	Norton	Sherston	Stanton	Benefice total
Unrestricted	£1,593	£7,208	£2,067	£27,366	£21,968	£22,317	£34,866	£55,595	£172,980
Restricted	£0	£1,567	£10,126	£3,939	£17,552	£0	£66,083	£20,932	£120,199
Total	£1,593	£8,775	£12,193	£31,305	£39,520	£22,317	£100,949	£76,527	£293,179

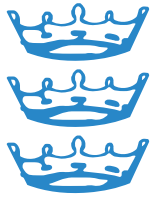
Diocesan Fees are calculated and collected by our Administrative Officer, who also makes the monthly returns to the Diocese. Many parishioners give through Parish Giving. We are introducing cashless payment methods for donations, with facilities already installed in Luckington and Sherston.



INCOME AND EXPENDITURE 2018 TO 2022







THE DIOCESE OF BRISTOL

HUMANITY RECONCILED CREATION RESTORED

The Diocese of Bristol is presided over by the Bishop of Bristol, The Right Reverend Vivienne Faull. The Bishop of Bristol is supported by the Suffragan Bishop of Swindon, the Right Reverend Neil Warwick. The Venerable Christopher Bryan is the Archdeacon of Malmesbury and the Reverend Becky Waring is the Acting Archdeacon of Bristol. The Reverend Adam Beaumont is the Associate Archdeacon.

Transforming Church. Together (TCT) its vision: Humanity Reconciled, Creation Restored. It began in 2021 with an extended period of listening to God and to one another. People from across the Diocese joined in conversations and online questionnaires to share experiences of faith, society and the church, and to discuss hopes for the future. From these conversations, four guiding values were discerned: Creativity, Openness, Bravery and Generosity.

Those values inspired a vision and strategy which seeks transformation across the whole Diocese by the grace of

God. Each Deanery and Benefice is encouraged to work out what TCT means in their particular context – the same principles can inspire and develop mission in very different ways. With major financial support from the national church, the Diocese is offering support and resources in key priority areas of ministry. These include:

- Enabling parishes to discern vision and implement plans
- Help for benefices with evangelism, discipleship plans and resources
- Training, coaching and support for teams setting up and running Fresh Expressions
- Support for ministerial wellbeing and vocation. Each incumbent will receive bimonthly coaching sessions, with additional support for those new to their post.
- Enhanced provision for volunteer training and administering safeguarding

- Increased capacity in the Diocesan office to support parishes with the care and improvement of church buildings
- Investing to become a Net Zero Diocese by 2030
- Overcoming barriers to faith by addressing the church's history on racial justice and diversity
- Developing partnerships between the church at various levels and local councils, businesses etc
- Investment in work with under 18s through school chaplaincy, youth interns and workers
- Investment in deprived parishes, church plants/grfts and new Mission Areas

This is a huge, exciting, and sometimes frightening vision, which we can only attempt in the strength Jesus supplies through his Spirit.

Diocesan Support Service

The Diocesan Support Services exist to support the mission of the church. Based at the Diocesan Office to the north of Bristol and made up of 50 employees and volunteers, the DSS serve ministers, parishes and schools by expressing vision, strengthening relationships, empowering people, maximizing resources and developing structures. We offer training, consultancy, advice in a range of areas, highlight and share best practice across the Diocese and manage different aspects of the life of the Diocese.



CONTACT

The Reverend Steve Wilkinson, Area Dean of North Wilts
rector@woodbridgegroup.co.uk

Online

www.gauzebrook.org

Please send your completed application form to jobs@bristoldiocese.org.

Thank you for reading this profile. If you would like to know more about this vacancy please email the Acting Archdeacon of Bristol, Becky Waring, becky.waring@bristoldiocese.org giving a contact number and she will contact you.

